

## Product datasheet for **TA308583**

### **GNRPX (PLEKHJ1) Rabbit Polyclonal Antibody**

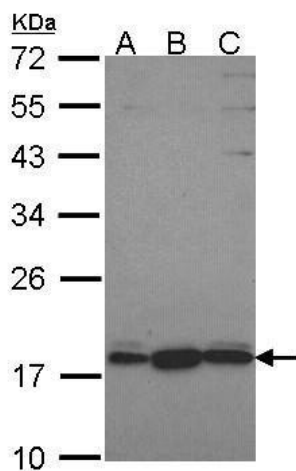
#### **Product data:**

<b>Product Type:</b>	Primary Antibodies
<b>Applications:</b>	WB
<b>Recommended Dilution:</b>	WB:1:500-1:3000
<b>Reactivity:</b>	Human (Predicted: Rat, Bovine, Rhesus Monkey, Mouse)
<b>Host:</b>	Rabbit
<b>Isotype:</b>	IgG
<b>Clonality:</b>	Polyclonal
<b>Immunogen:</b>	Synthetic peptide corresponding to a region within amino acids 87 and 149 of GNRPX (Uniprot ID#Q9NW61)
<b>Formulation:</b>	0.1M Tris, 0.1M Glycine, 10% Glycerol (pH7). 0.01% Thimerosal was added as a preservative.
<b>Purification:</b>	Purified by antigen-affinity chromatography.
<b>Conjugation:</b>	Unconjugated
<b>Storage:</b>	Store at -20°C as received.
<b>Stability:</b>	Stable for 12 months from date of receipt.
<b>Predicted Protein Size:</b>	18 kDa
<b>Gene Name:</b>	pleckstrin homology domain containing J1
<b>Database Link:</b>	<a href="#">NP_060519</a> <a href="#">Entrez Gene 78670 Mouse</a> <a href="#">Entrez Gene 314634 Rat</a> <a href="#">Entrez Gene 55111 Human</a> <a href="#">Q9NW61</a>
<b>Synonyms:</b>	GNRPX
<b>Note:</b>	Seq homology of immunogen across species: Mouse (82%), Rat (91%), Rhesus Monkey (100%), Bovine (92%)



[View online »](#)

## Product images:



Sample (30 ug of whole cell lysate). A: HeLa. B: JurKat. C: NT2D1. 12% SDS PAGE. GNRPX antibody. TA308583 diluted at 1:1000.