

## Product datasheet for **TA308582**

### CIP29 (SARNP) Rabbit Polyclonal Antibody

#### Product data:

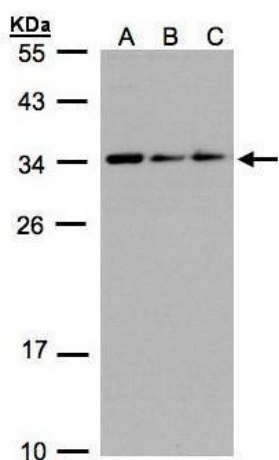
Product Type:	Primary Antibodies
Applications:	IF, IHC, WB
Recommended Dilution:	ICC/IF:1:100-1:1000; IHC:1:100-1:1000; WB:1:500-1:3000
Reactivity:	Human (Predicted: Mouse, Chicken, Rat, Bovine)
Host:	Rabbit
Isotype:	IgG
Clonality:	Polyclonal
Immunogen:	Recombinant fragment corresponding to a region within amino acids 4 and 210 of CIP29 (Uniprot ID#P82979)
Formulation:	0.1M Tris, 0.1M Glycine, 10% Glycerol (pH7). 0.01% Thimerosal was added as a preservative.
Concentration:	lot specific
Purification:	Purified by antigen-affinity chromatography.
Conjugation:	Unconjugated
Storage:	Store at -20°C as received.
Stability:	Stable for 12 months from date of receipt.
Predicted Protein Size:	24 kDa
Gene Name:	SAP domain containing ribonucleoprotein
Database Link:	<a href="#">NP_149073</a> <a href="#">Entrez Gene 66118 Mouse</a> <a href="#">Entrez Gene 362819 Rat</a> <a href="#">Entrez Gene 84324 Human</a> <a href="#">P82979</a>
Background:	This gene encodes a protein that is upregulated in response to various cytokines. The encoded protein may play a role in cell cycle progression. A translocation between this gene and the myeloid/lymphoid leukemia gene, resulting in expression of a chimeric protein, has been associated with acute myelomonocytic leukemia. Pseudogenes exist on chromosomes 7 and 8. Alternatively spliced transcript variants have been described. [provided by RefSeq]
Synonyms:	CIP29; HCC1; HSPC316; THO1



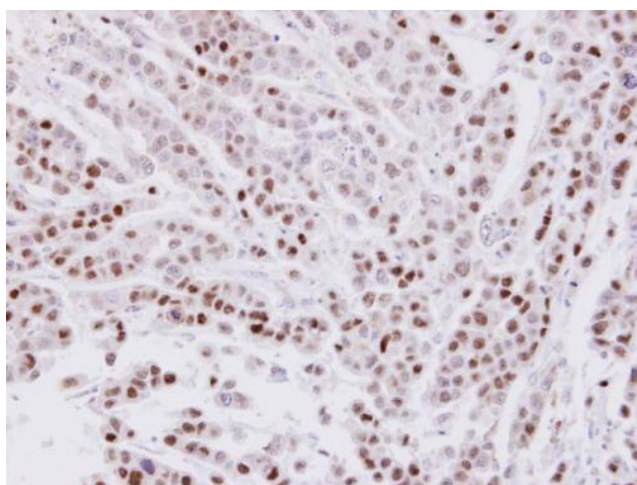
[View online »](#)

Note: Seq homology of immunogen across species: Mouse (95%), Chicken (80%), Rat (95%), Bovine (96%)

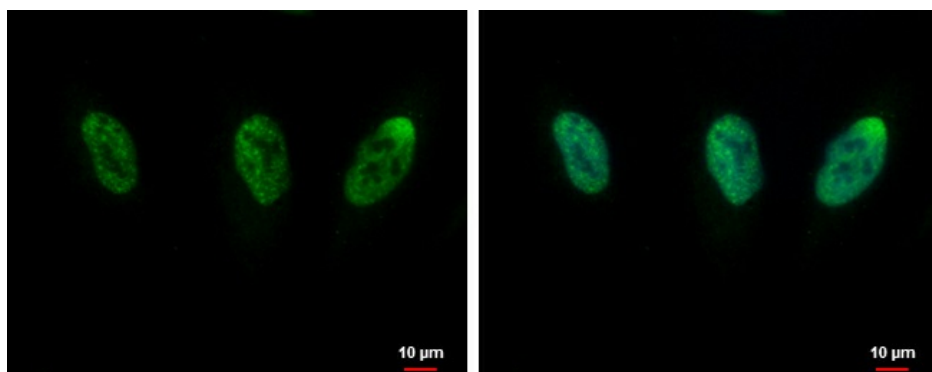
### Product images:



Sample (30 ug whole cell lysate). A:293T. B:A431. C:H1299. 12% SDS PAGE. TA308582 diluted at 1:1000



Immunohistochemical analysis of paraffin-embedded MDAMB-468 xenograft, using CIP29 (TA308582) antibody at 1:100 dilution.



CIP29 antibody [N1C3] detects CIP29 protein at nucleus by immunofluorescent analysis. Sample: HeLa cells were fixed in 4% paraformaldehyde at RT for 15 min. Green: CIP29 protein stained by CIP29 antibody [N1C3] (TA308582) diluted at 1:1000. Blue: Hoechst