

Product datasheet for **TA308581**

CPNE3 Rabbit Polyclonal Antibody

Product data:

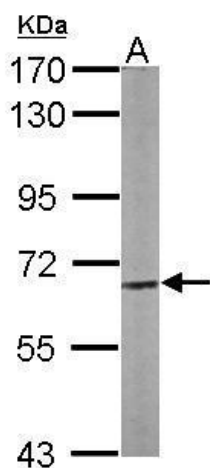
Product Type:	Primary Antibodies
Applications:	IHC, WB
Recommended Dilution:	IHC:1:100-1:1000; WB:1:500-1:3000
Reactivity:	Human, Mouse (Predicted: Xenopus, Bovine, X. tropicalis)
Host:	Rabbit
Isotype:	IgG
Clonality:	Polyclonal
Immunogen:	Recombinant fragment corresponding to a region within amino acids 234 and 537 of Copine 3 (Uniprot ID#O75131)
Formulation:	0.1M Tris, 0.1M Glycine, 10% Glycerol (pH7). 0.01% Thimerosal was added as a preservative.
Concentration:	lot specific
Purification:	Purified by antigen-affinity chromatography.
Conjugation:	Unconjugated
Storage:	Store at -20°C as received.
Stability:	Stable for 12 months from date of receipt.
Predicted Protein Size:	60 kDa
Gene Name:	copine 3
Database Link:	NP_003900 Entrez Gene 70568 Mouse Entrez Gene 8895 Human O75131
Background:	Calcium-dependent membrane-binding proteins may regulate molecular events at the interface of the cell membrane and cytoplasm. This gene encodes a protein which contains two type II C2 domains in the amino-terminus and an A domain-like sequence in the carboxy-terminus. The A domain mediates interactions between integrins and extracellular ligands. [provided by RefSeq]
Synonyms:	CPN3; PRO1071



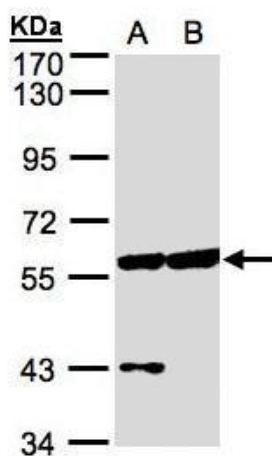
[View online »](#)

Note: Seq homology of immunogen across species: Xenopus laevis (83%), Bovine (94%), Xenopus tropicalis (84%)

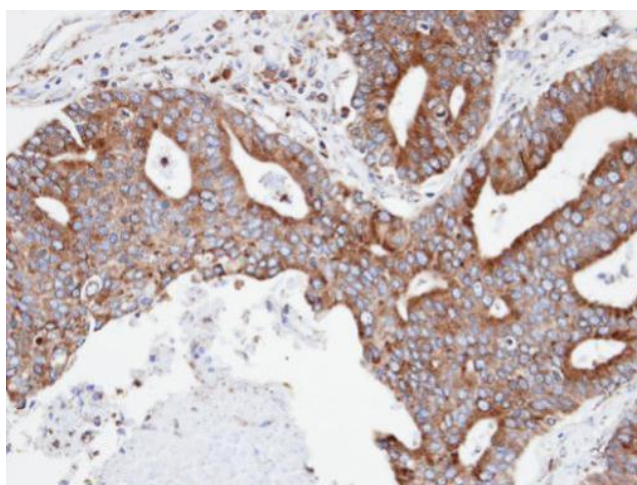
Product images:



Sample (50 ug of whole cell lysate). A: Mouse brain. 7.5% SDS PAGE. TA308581 diluted at 1:1000.



Sample (30 ug of whole cell lysate). A:HeLa S3. B:Hep G2. 7.5% SDS PAGE. TA308581 diluted at 1:500



Immunohistochemical analysis of paraffin-embedded endometrial OVCA, using CPNE3 (TA308581) antibody at 1:100 dilution.