

Product datasheet for **TA308580**

JMJD6 Rabbit Polyclonal Antibody

Product data:

Product Type:	Primary Antibodies
Applications:	IHC, WB
Recommended Dilution:	IHC:1:100-1:1000; WB:1:500-1:3000
Reactivity:	Human, Mouse (Predicted: Chicken, Rat, Zebrafish, Bovine, X. tropicalis)
Host:	Rabbit
Isotype:	IgG
Clonality:	Polyclonal
Immunogen:	Recombinant fragment contain a sequence corresponding to a region within amino acids 1 and 234 of PSR (Uniprot ID#Q6NYC1)
Formulation:	1XPBS, 1% BSA, 20% Glycerol (pH7). 0.01% Thimerosal was added as a preservative.
Purification:	Purified by antigen-affinity chromatography.
Conjugation:	Unconjugated
Storage:	Store at -20°C as received.
Stability:	Stable for 12 months from date of receipt.
Predicted Protein Size:	46 kDa
Gene Name:	arginine demethylase and lysine hydroxylase
Database Link:	NP_001074930 Entrez Gene 107817 Mouse Entrez Gene 360665 Rat Entrez Gene 23210 Human Q6NYC1
Background:	This gene encodes a nuclear protein with a JmjC domain. JmjC domain-containing proteins are predicted to function as protein hydroxylases or histone demethylases. This protein was first identified as a putative phosphatidylserine receptor involved in phagocytosis of apoptotic cells; however, subsequent studies have indicated that it does not directly function in the clearance of apoptotic cells, and questioned whether it is a true phosphatidylserine receptor. Multiple transcript variants encoding different isoforms have been found for this gene. [provided by RefSeq]
Synonyms:	PSR; PTDSR; PTDSR1

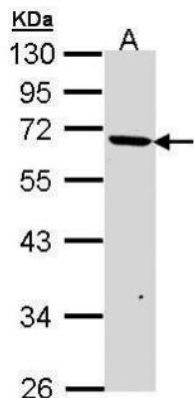


[View online »](#)

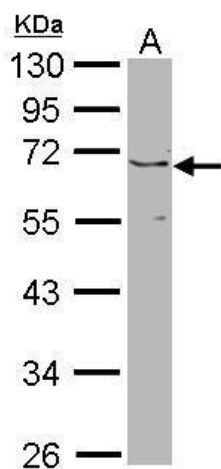
Note: Seq homology of immunogen across species: Chicken (96%), Rat (98%), Zebrafish (87%), Bovine (98%), Xenopus tropicalis (87%)

Protein Families: Druggable Genome, ES Cell Differentiation/IPS

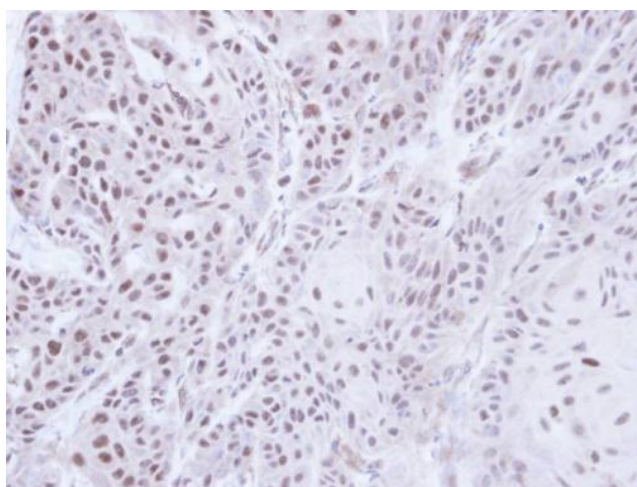
Product images:



Sample (30 ug of whole cell lysate). A: A431. 10% SDS PAGE. TA308580 diluted at 1:1000.



Sample (30 ug of whole cell lysate). A: NIH-3T3. 10% SDS PAGE. PSR antibody. TA308580 diluted at 1:1000.



Immunohistochemical analysis of paraffin-embedded Cal27 Xenograft, using PSR (TA308580) antibody at 1:100 dilution.