

Product datasheet for **TA308577**

Wilms Tumor Protein (WT1) Rabbit Polyclonal Antibody

Product data:

Product Type:	Primary Antibodies
Applications:	IHC
Recommended Dilution:	IHC:1:100-1:1000
Reactivity:	Human
Host:	Rabbit
Isotype:	IgG
Clonality:	Polyclonal
Immunogen:	Recombinant fragment corresponding to a region within amino acids 209 and 449 of Wilms Tumor 1 (Uniprot ID#P19544)
Formulation:	1XPBS, 20% Glycerol (pH7). 0.025% ProClin 300 was added as a preservative.
Purification:	Purified by antigen-affinity chromatography.
Conjugation:	Unconjugated
Storage:	Store at -20°C as received.
Stability:	Stable for 12 months from date of receipt.
Predicted Protein Size:	56 kDa
Gene Name:	Wilms tumor 1
Database Link:	NP_077743 Entrez Gene 7490 Human P19544
Background:	This gene encodes a transcription factor that contains four zinc-finger motifs at the C-terminus and a proline/glutamine-rich DNA-binding domain at the N-terminus. It has an essential role in the normal development of the urogenital system, and it is mutated in a small subset of patients with Wilm's tumors. Multiple transcript variants, resulting from alternative splicing at two coding exons, have been well characterized. There is also evidence for the use of non-AUG (CUG) translation initiation site upstream of, and in-frame with the first AUG, leading to additional isoforms. Authors of PMID:7926762 also provide evidence that WT1 mRNA undergoes RNA editing in human and rat, and that this process is tissue-restricted and developmentally regulated. [provided by RefSeq]

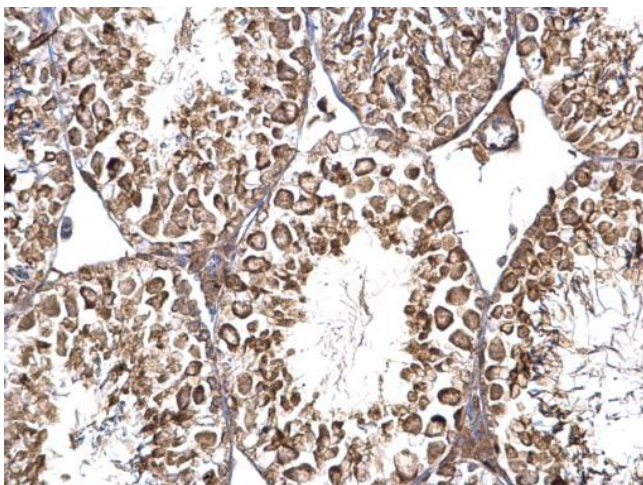


[View online »](#)

Synonyms: AWT1; GUD; WAGR; Wilms tumor 1; WIT-2; WT33

Protein Families: Druggable Genome, Transcription Factors

Product images:



Wilms Tumor 1 antibody detects Wilms Tumor 1 protein at nucleus and cytosol on mouse testis by immunohistochemical analysis. Sample: Paraffin-embedded mouse testis. Wilms Tumor 1 antibody (TA308577) dilution: 1:500.