

## Product datasheet for **TA308576**

### ARF1 Rabbit Polyclonal Antibody

#### Product data:

Product Type:	Primary Antibodies
Applications:	IF, IHC, WB
Recommended Dilution:	ICC/IF:1:100-1:1000; IHC:1:100-1:1000; WB:1:1000-1:10000
Reactivity:	Human, Mouse (Predicted: Rat, Dog, Pig, Sheep, Bovine, Rhesus Monkey)
Host:	Rabbit
Isotype:	IgG
Clonality:	Polyclonal
Immunogen:	Recombinant fragment contain a sequence corresponding to a region within amino acids 1 and 162 of ARF1 (Uniprot ID#P84077)
Formulation:	0.1M Tris, 0.1M Glycine, 10% Glycerol (pH7). 0.01% Thimerosal was added as a preservative.
Concentration:	lot specific
Purification:	Purified by antigen-affinity chromatography.
Conjugation:	Unconjugated
Storage:	Store at -20°C as received.
Stability:	Stable for 12 months from date of receipt.
Predicted Protein Size:	21 kDa
Gene Name:	ADP ribosylation factor 1
Database Link:	<a href="#">NP_001019399</a> <a href="#">Entrez Gene 11840 Mouse</a> <a href="#">Entrez Gene 64310 Rat</a> <a href="#">Entrez Gene 106557448 Dog</a> <a href="#">Entrez Gene 100856517 Dog</a> <a href="#">Entrez Gene 375 Human</a> <a href="#">P84077</a>



[View online »](#)

**Background:**

ADP-ribosylation factor 1 (ARF1) is a member of the human ARF gene family. The family members encode small guanine nucleotide-binding proteins that stimulate the ADP-ribosyltransferase activity of cholera toxin and play a role in vesicular trafficking as activators of phospholipase D. The gene products, including 6 ARF proteins and 11 ARF-like proteins, constitute a family of the RAS superfamily. The ARF proteins are categorized as class I (ARF1, ARF2 and ARF3), class II (ARF4 and ARF5) and class III (ARF6), and members of each class share a common gene organization. The ARF1 protein is localized to the Golgi apparatus and has a central role in intra-Golgi transport. Multiple alternatively spliced transcript variants encoding the same protein have been found for this gene. [provided by RefSeq]

**Synonyms:**

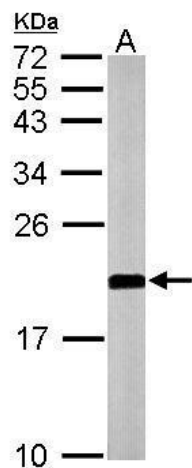
ADP-ribosylation factor 1; OTTHUMP00000035715

**Note:**

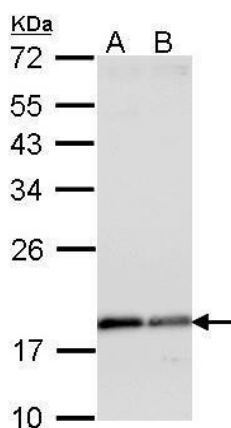
Seq homology of immunogen across species: Rat (100%), Dog (100%), Pig (100%), Sheep (100%), Rhesus Monkey (100%), Bovine (100%)

**Protein Pathways:**

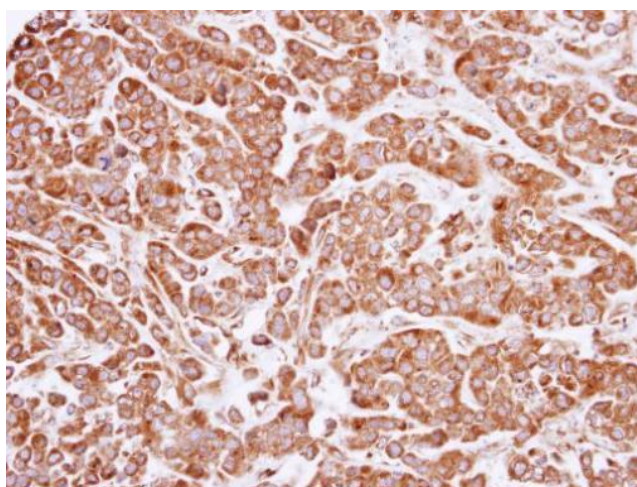
Vibrio cholerae infection

**Product images:**

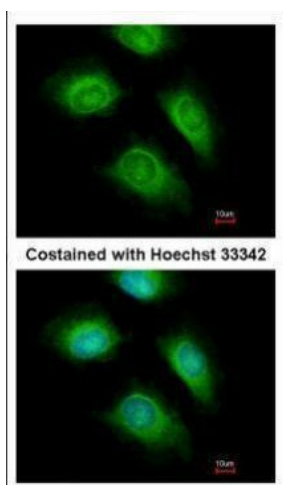
Sample (50 ug of whole cell lysate). A: mouse brain. 12% SDS PAGE. TA308576 diluted at 1:10000.



Sample (30 ug of whole cell lysate). A: A431. B: H1299. 12% SDS PAGE. TA308576 diluted at 1:1000.



Immunohistochemical analysis of paraffin-embedded MDA-MB468 xenograft, using ARF1 (TA308576) antibody at 1:100 dilution.



Immunofluorescence analysis of methanol-fixed HeLa, using ARF1 (TA308576) antibody at 1:200 dilution.