

Product datasheet for **TA308574**

ARF1 Rabbit Polyclonal Antibody

Product data:

Product Type:	Primary Antibodies
Applications:	IHC, WB
Recommended Dilution:	IHC:1:100-1:1000; WB:1:500-1:3000
Reactivity:	Human (Predicted: Zebrafish, Xenopus, Dog, Pig, Chicken, Sheep, Bovine, Rhesus Monkey, X. tropicalis)
Host:	Rabbit
Isotype:	IgG
Clonality:	Polyclonal
Immunogen:	Synthetic peptide contain a sequence corresponding to a region within amino acids 50 and 104 of ARF1
Formulation:	0.1M Tris, 0.1M Glycine, 10% Glycerol (pH7). 0.01% Thimerosal was added as a preservative.
Concentration:	lot specific
Purification:	Purified by antigen-affinity chromatography.
Conjugation:	Unconjugated
Storage:	Store at -20°C as received.
Stability:	Stable for 12 months from date of receipt.
Predicted Protein Size:	21 kDa
Gene Name:	ADP ribosylation factor 1
Database Link:	NP_001019399 Entrez Gene 106557448 Dog Entrez Gene 100856517 Dog Entrez Gene 375 Human P84077



[View online »](#)

Background:

ADP-ribosylation factor 1 (ARF1) is a member of the human ARF gene family. The family members encode small guanine nucleotide-binding proteins that stimulate the ADP-ribosyltransferase activity of cholera toxin and play a role in vesicular trafficking as activators of phospholipase D. The gene products, including 6 ARF proteins and 11 ARF-like proteins, constitute a family of the RAS superfamily. The ARF proteins are categorized as class I (ARF1, ARF2 and ARF3), class II (ARF4 and ARF5) and class III (ARF6), and members of each class share a common gene organization. The ARF1 protein is localized to the Golgi apparatus and has a central role in intra-Golgi transport. Multiple alternatively spliced transcript variants encoding the same protein have been found for this gene. [provided by RefSeq]

Synonyms:

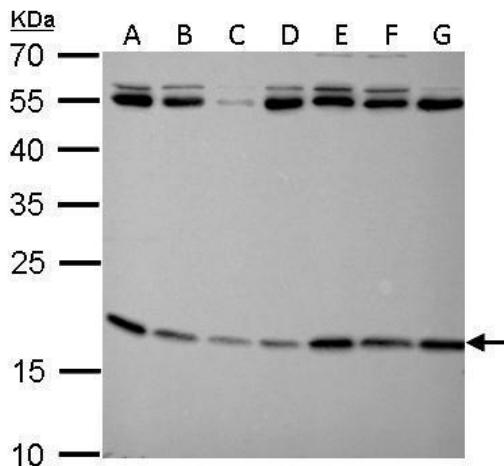
ADP-ribosylation factor 1; OTTHUMP00000035715

Note:

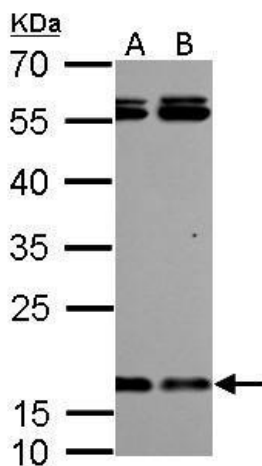
Seq homology of immunogen across species: Zebrafish (100%), *Xenopus laevis* (93%), *Xenopus Tropicalis* (93%), Dog (100%), Pig (100%), Chicken (100%), Sheep (100%), Rhesus Monkey (100%), Bovine (100%)

Protein Pathways:

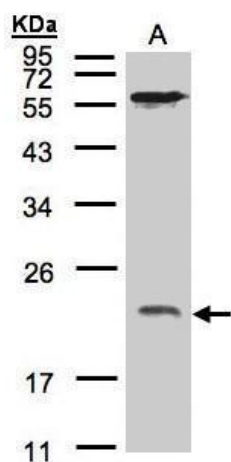
Vibrio cholerae infection

Product images:

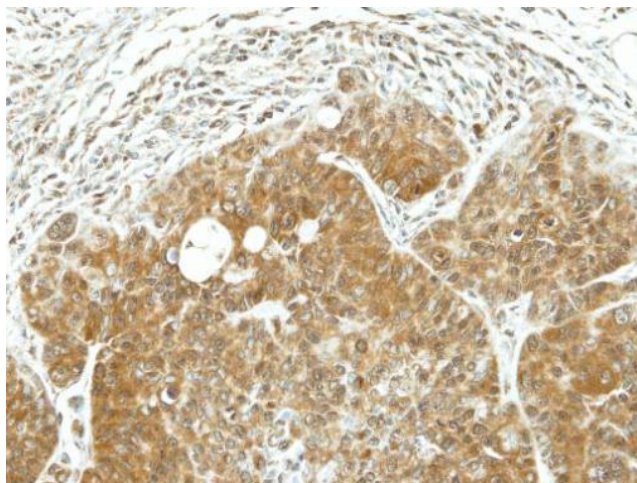
ARF1 antibody detects ARF1 protein by Western blot analysis. A. 30 ug Neuro2A whole cell lysate/extract. B. 30 ug GL261 whole cell lysate/extract. C. 30 ug C8D30 whole cell lysate/extract. D. 30 ug NIH-3T3 whole cell lysate/extract. E. 30 ug BCL-1 whole c



ARF1 antibody detects ARF1 protein by Western blot analysis. A. 30 ug PC-12 whole cell lysate/extract. B. 30 ug Rat2 whole cell lysate/extract. 12 % SDS-PAGE. ARF1 antibody (TA308574) dilution: 1:500



Sample (30 ug of whole cell lysate). A:Hep G2. 12% SDS PAGE. TA308574 diluted at 1:500



Immunohistochemical analysis of paraffin-embedded SW480 xenograft, using ARF1 (TA308574) antibody at 1:100 dilution.