

Product datasheet for **TA308573**

Cathepsin S (CTSS) Rabbit Polyclonal Antibody

Product data:

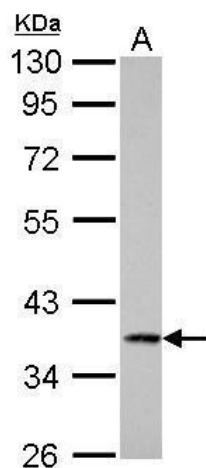
Product Type:	Primary Antibodies
Applications:	IHC, WB
Recommended Dilution:	IHC:1:100-1:1000; WB:1:500-1:3000
Reactivity:	Human
Host:	Rabbit
Isotype:	IgG
Clonality:	Polyclonal
Immunogen:	Recombinant fragment contain a sequence corresponding to a region within amino acids 32 and 265 of Cathepsin S (Uniprot ID#P25774)
Formulation:	0.1M Tris, 0.1M Glycine, 10% Glycerol (pH7). 0.01% Thimerosal was added as a preservative.
Concentration:	lot specific
Purification:	Purified by antigen-affinity chromatography.
Conjugation:	Unconjugated
Storage:	Store at -20°C as received.
Stability:	Stable for 12 months from date of receipt.
Predicted Protein Size:	38 kDa
Gene Name:	cathepsin S
Database Link:	NP_004070 Entrez Gene 1520 Human P25774
Background:	The protein encoded by this gene, a member of the peptidase C1 family, is a lysosomal cysteine proteinase that may participate in the degradation of antigenic proteins to peptides for presentation on MHC class II molecules. The encoded protein can function as an elastase over a broad pH range in alveolar macrophages. Transcript variants utilizing alternative polyadenylation signals exist for this gene. [provided by RefSeq]
Synonyms:	FLJ50259; MGC3886
Protein Families:	Druggable Genome, Protease



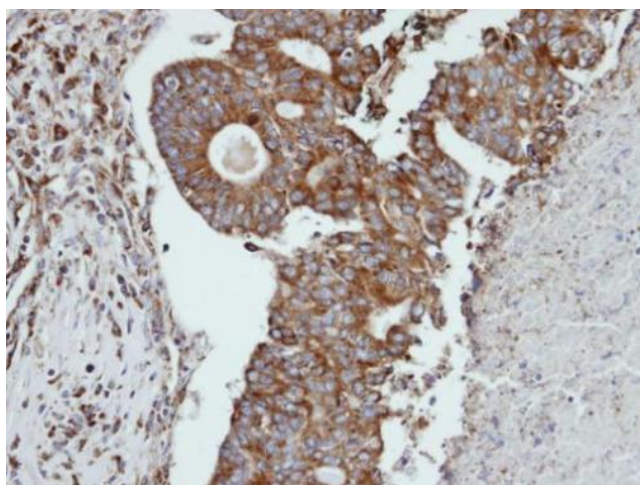
[View online »](#)

Protein Pathways: Antigen processing and presentation, Lysosome

Product images:



Cathepsin S antibody detects CTSS protein by Western blot analysis. A. 30 ug HeLa whole cell lysate/extract. 10 % SDS-PAGE. Cathepsin S antibody (TA308573) dilution: 1:1000



Immunohistochemical analysis of paraffin-embedded endometrial OVCA, using CTSS (TA308573) antibody at 1:100 dilution.