

Product datasheet for **TA308571**

DIAPH1 Rabbit Polyclonal Antibody

Product data:

Product Type:	Primary Antibodies
Applications:	IF, IHC, WB
Recommended Dilution:	ICC/IF:1:100-1:1000; IHC:1:100-1:1000; WB:1:500-1:3000
Reactivity:	Human
Host:	Rabbit
Isotype:	IgG
Clonality:	Polyclonal
Immunogen:	Recombinant fragment corresponding to a region within amino acids 1 and 237 of DIAPH1 (Uniprot ID#O60610)
Formulation:	0.1M Tris, 0.1M Glycine, 10% Glycerol (pH7). 0.01% Thimerosal was added as a preservative.
Concentration:	lot specific
Purification:	Purified by antigen-affinity chromatography.
Conjugation:	Unconjugated
Storage:	Store at -20°C as received.
Stability:	Stable for 12 months from date of receipt.
Predicted Protein Size:	141 kDa
Gene Name:	diaphanous related formin 1
Database Link:	NP_005210 Entrez Gene 1729 Human O60610
Background:	This gene is a homolog of the Drosophila diaphanous gene, and has been linked to autosomal dominant, fully penetrant, nonsyndromic sensorineural progressive low-frequency hearing loss. Actin polymerization involves proteins known to interact with diaphanous protein in Drosophila and mouse. It has therefore been speculated that this gene may have a role in the regulation of actin polymerization in hair cells of the inner ear. Alternatively spliced transcript variants encoding distinct isoforms have been found for this gene. [provided by RefSeq]
Synonyms:	DFNA1; DIA1; DRF1; hDIA1; LFHL1; SCBMS

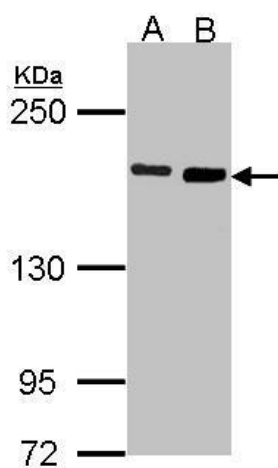


[View online »](#)

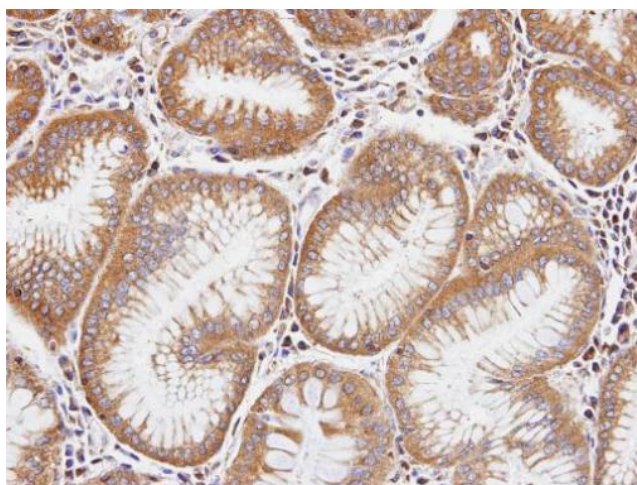
Protein Families: Druggable Genome, Stem cell - Pluripotency

Protein Pathways: Focal adhesion, Regulation of actin cytoskeleton

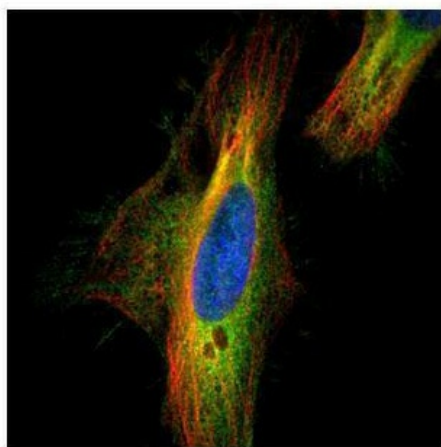
Product images:



Sample (30 ug of whole cell lysate). A: H1299. B: Raji. 7.5% SDS PAGE. TA308571 diluted at 1:1000.



Immunohistochemical analysis of paraffin-embedded gastric tissue, using DIAPH1 (TA308571) antibody at 1:100 dilution.



Confocal immunofluorescence analysis (Olympus FV10i) of paraformaldehyde-fixed HeLa, using DIAPH1 (TA308571) antibody (Green) at 1:500 dilution. Alpha-tubulin filaments were labeled with anti-alpha tubulin antibody (Red) at 1:2000.