

## Product datasheet for **TA308570**

### VCP Rabbit Polyclonal Antibody

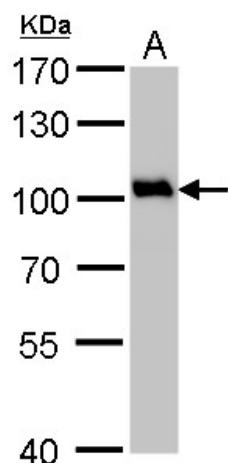
#### Product data:

Product Type:	Primary Antibodies
Applications:	IF, IHC, WB
Recommended Dilution:	ICC/IF:1:100-1:1000; IHC:1:100-1:1000; WB:1:1000-1:10000
Reactivity:	Human, Mouse (Predicted: Chicken, Pig, Xenopus, Zebrafish, Bovine)
Host:	Rabbit
Isotype:	IgG
Clonality:	Polyclonal
Immunogen:	Recombinant fragment corresponding to a region within amino acids 1 and 206 of VCP (Uniprot ID#P55072)
Formulation:	1XPBS, 1% BSA, 20% Glycerol (pH7). 0.025% ProClin 300 was added as a preservative.
Purification:	Purified by antigen-affinity chromatography.
Conjugation:	Unconjugated
Storage:	Store at -20°C as received.
Stability:	Stable for 12 months from date of receipt.
Predicted Protein Size:	89 kDa
Gene Name:	valosin containing protein
Database Link:	<a href="#">NP_009057</a> <a href="#">Entrez Gene 269523 Mouse</a> <a href="#">Entrez Gene 7415 Human</a> <a href="#">P55072</a>
Background:	The protein encoded by this gene is a member of a family that includes putative ATP-binding proteins involved in vesicle transport and fusion, 26S proteasome function, and assembly of peroxisomes. This protein, as a structural protein, is associated with clathrin, and heat-shock protein Hsc70, to form a complex. It has been implicated in a number of cellular events that are regulated during mitosis, including homotypic membrane fusion, spindle pole body function, and ubiquitin-dependent protein degradation. [provided by RefSeq]
Synonyms:	ALS14; CMT2Y; HEL-220; HEL-S-70; IBMPFD; IBMPFD1; p97; TERA
Note:	Seq homology of immunogen across species: Chicken (99%), Pig (99%), Xenopus laevis (98%), Zebrafish (97%), Bovine (99%), Xenopus tropicalis (99%)

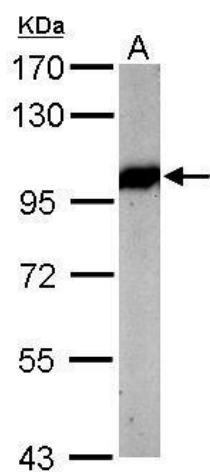


[View online »](#)

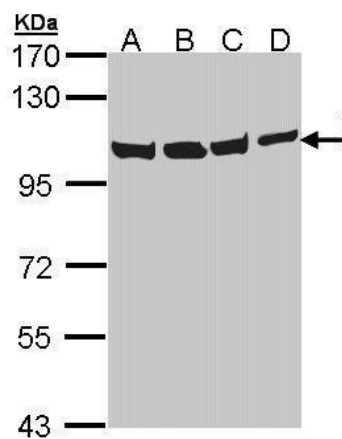
## Product images:



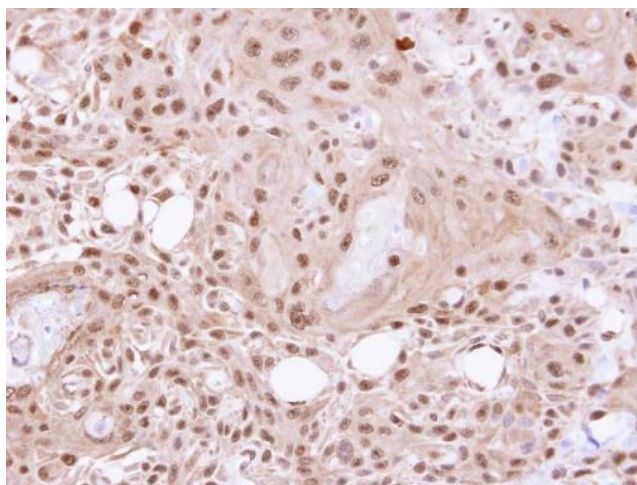
VCP antibody detects VCP protein by Western blot analysis. A. 50 ug rat brain lysate/extract. 7.5 % SDS-PAGE. VCP antibody (TA308570) dilution: 1:1000



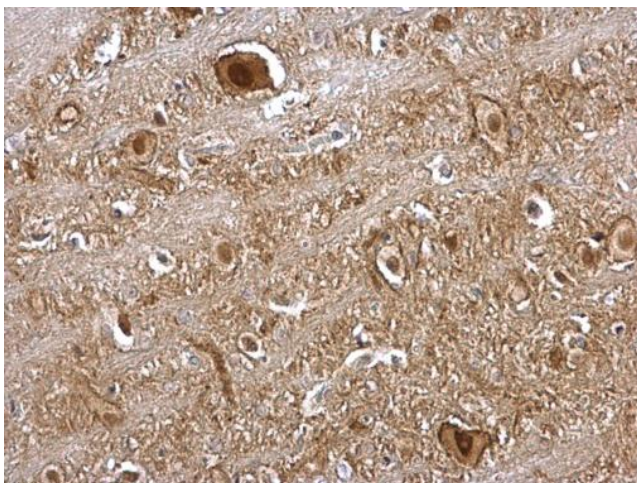
Sample (50 ug of whole cell lysate). A: mouse brain. 7.5% SDS PAGE. TA308570 diluted at 1:5000.



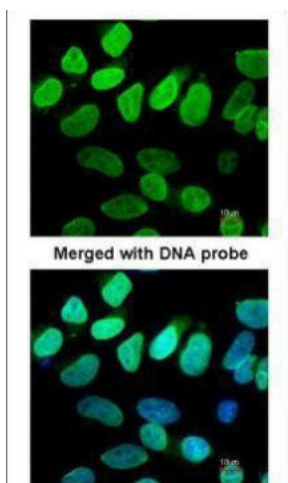
Sample (30 ug of whole cell lysate). A: HeLa. B: Hep G2. C: Molt-4. D: Raji. 7.5% SDS PAGE. TA308570 diluted at 1:1000.



Immunohistochemical analysis of paraffin-embedded Ca922 xenograft, using VCP (p97) (TA308570) antibody at 1:500 dilution.



VCP antibody [N1N2], N-term detects VCP protein at nucleus and cytosol on rat brain stem by immunohistochemical analysis. Sample: Paraffin-embedded rat brain stem. VCP antibody [N1N2], N-term (TA308570) dilution: 1:500.



Immunofluorescence analysis of paraformaldehyde-fixed HeLa, using VCP (p97) (TA308570) antibody at 1:200 dilution.