

Product datasheet for **TA308569**

ARPC2 Rabbit Polyclonal Antibody

Product data:

Product Type:	Primary Antibodies
Applications:	IF, IHC, WB
Recommended Dilution:	ICC/IF:1:100-1:1000; IHC:1:100-1:1000; WB:1:500-1:5000
Reactivity:	Human, Mouse (Predicted: Pig, Bovine, Rhesus Monkey)
Host:	Rabbit
Isotype:	IgG
Clonality:	Polyclonal
Immunogen:	Recombinant fragment corresponding to a region within amino acids 14 and 300 of ARPC2 (Uniprot ID#O15144)
Formulation:	0.1M Tris, 0.1M Glycine, 10% Glycerol (pH7). 0.01% Thimerosal was added as a preservative.
Concentration:	lot specific
Purification:	Purified by antigen-affinity chromatography.
Conjugation:	Unconjugated
Storage:	Store at -20°C as received.
Stability:	Stable for 12 months from date of receipt.
Predicted Protein Size:	34 kDa
Gene Name:	actin related protein 2/3 complex subunit 2
Database Link:	NP_005722 Entrez Gene 76709 Mouse Entrez Gene 10109 Human O15144
Background:	This gene encodes one of seven subunits of the human Arp2/3 protein complex. The Arp2/3 protein complex has been implicated in the control of actin polymerization in cells and has been conserved through evolution. The exact role of the protein encoded by this gene, the p34 subunit, has yet to be determined. Two alternatively spliced variants have been characterized to date. Additional alternatively spliced variants have been described but their full length nature has not been determined. [provided by RefSeq]
Synonyms:	ARC34; p34-Arc; PNAS-139; PRO2446

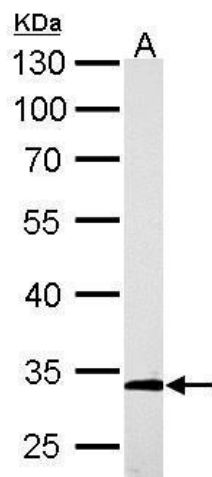


[View online »](#)

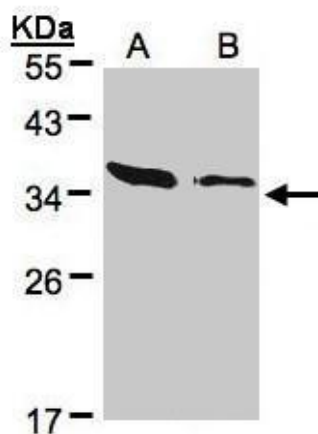
Note: Seq homology of immunogen across species: Pig (100%), Rhesus Monkey (100%), Bovine (100%)

Protein Pathways: Fc gamma R-mediated phagocytosis, Pathogenic Escherichia coli infection, Regulation of actin cytoskeleton

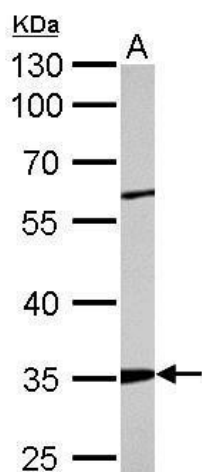
Product images:



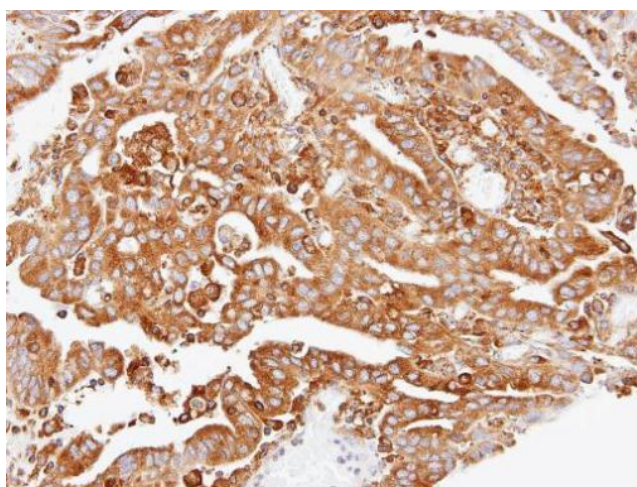
ARPC2 antibody detects ARPC2 protein by Western blot analysis. A. 50 ug rat kidney lysate/extract. 10 % SDS-PAGE. ARPC2 antibody (TA308569) dilution: 1:5000



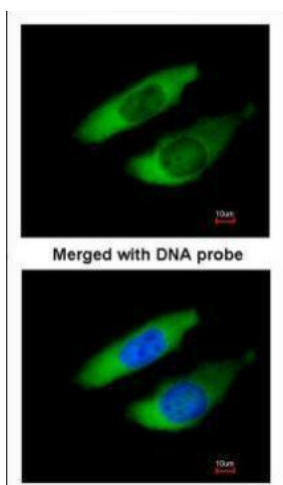
Sample (30 ug of whole cell lysate). A:293T. B: HeLa S3. 12% SDS PAGE. TA308569 diluted at 1:500



ARPC2 antibody detects ARPC2 protein by Western blot analysis. A. 50 ug mouse kidney lysate/extract. 10 % SDS-PAGE. ARPC2 antibody (TA308569) dilution: 1:2000



Immunohistochemical analysis of paraffin-embedded OVCA xenograft, using ARPC2 (TA308569) antibody at 1:100 dilution.



Immunofluorescence analysis of paraformaldehyde-fixed HeLa, using ARPC2 (TA308569) antibody at 1:200 dilution.