

## Product datasheet for **TA308566**

### CMAS Rabbit Polyclonal Antibody

#### Product data:

Product Type:	Primary Antibodies
Applications:	IF, WB
Recommended Dilution:	ICC/IF:1:100-1:1000; WB:1:500-1:3000
Reactivity:	Human (Predicted: Rhesus Monkey)
Host:	Rabbit
Isotype:	IgG
Clonality:	Polyclonal
Immunogen:	Recombinant fragment corresponding to a region within amino acids 69 and 414 of CMAS (Uniprot ID#Q8NFW8)
Formulation:	0.1M Tris, 0.1M Glycine, 10% Glycerol (pH7). 0.01% Thimerosal was added as a preservative.
Concentration:	lot specific
Purification:	Purified by antigen-affinity chromatography.
Conjugation:	Unconjugated
Storage:	Store at -20°C as received.
Stability:	Stable for 12 months from date of receipt.
Predicted Protein Size:	48 kDa
Gene Name:	cytidine monophosphate N-acetylneuraminic acid synthetase
Database Link:	<a href="#">NP_061156</a> <a href="#">Entrez Gene 55907 Human</a> <a href="#">Q8NFW8</a>
Background:	The enzyme encoded by this gene catalyzes the activation of Neu5Ac to Cytidine 5-prime-monophosphate N-acetylneuraminic acid (CMP-Neu5Ac), which provides the substrate required for the addition of sialic acid. Sialic acids of cell surface glycoproteins and glycolipids play a pivotal role in the structure and function of animal tissues. The pattern of cell surface sialylation is highly regulated during embryonic development, and changes with stages of differentiation. Studies of a similar murine protein suggest that this protein localizes to the nucleus. [provided by RefSeq]
Synonyms:	CSS

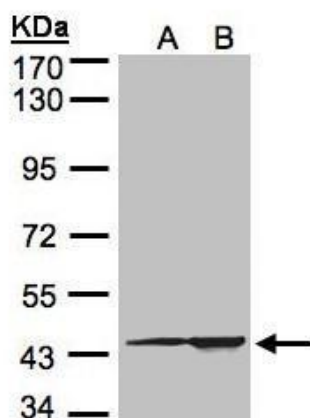


[View online »](#)

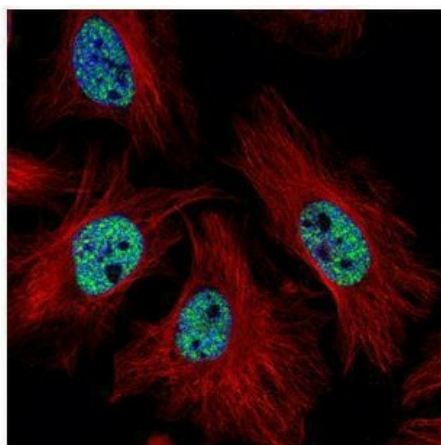
**Note:** Seq homology of immunogen across species: Rhesus Monkey (100%)

**Protein Pathways:** Amino sugar and nucleotide sugar metabolism, Metabolic pathways

**Product images:**



Sample (30 ug of whole cell lysate). A:293T.  
B:HeLa S3. 7.5% SDS PAGE. TA308566 diluted at 1:1500



Confocal immunofluorescence analysis (Olympus FV10i) of paraformaldehyde-fixed HeLa, using CMAS (TA308566) antibody (Green) at 1:500 dilution. Alpha-tubulin filaments were labeled with anti-alpha tubulin antibody (Red) at 1:2000.