

Product datasheet for **TA308565**

CORO1B Rabbit Polyclonal Antibody

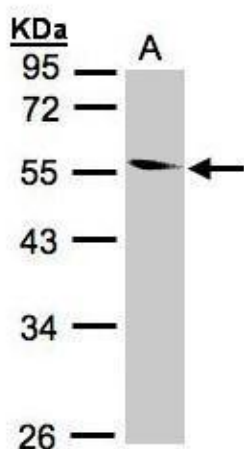
Product data:

Product Type:	Primary Antibodies
Applications:	IHC, WB
Recommended Dilution:	IHC:1:100-1:1000; WB:1:500-1:3000
Reactivity:	Human, Mouse (Predicted: Rabbit, Rat, Bovine)
Host:	Rabbit
Isotype:	IgG
Clonality:	Polyclonal
Immunogen:	Recombinant fragment corresponding to a region within amino acids 1 and 213 of Coronin 1B (Uniprot ID#Q9BR76)
Formulation:	0.1M Tris, 0.1M Glycine, 10% Glycerol (pH7). 0.01% Thimerosal was added as a preservative.
Concentration:	lot specific
Purification:	Purified by antigen-affinity chromatography.
Conjugation:	Unconjugated
Storage:	Store at -20°C as received.
Stability:	Stable for 12 months from date of receipt.
Predicted Protein Size:	54 kDa
Gene Name:	coronin 1B
Database Link:	NP_001018080 Entrez Gene 23789 Mouse Entrez Gene 29474 Rat Entrez Gene 57175 Human Q9BR76
Background:	Members of the coronin family, such as CORO1B, are WD repeat-containing actin-binding proteins that regulate cell motility (Cai et al., 2005 [PubMed 16027158]). [supplied by OMIM]
Synonyms:	CORONIN-2
Note:	Seq homology of immunogen across species: Rabbit (96%), Rat (98%), Bovine (97%)

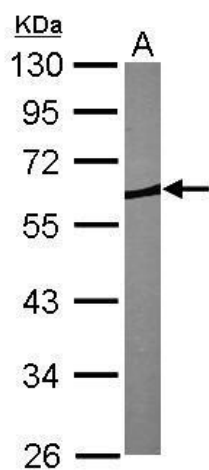


[View online »](#)

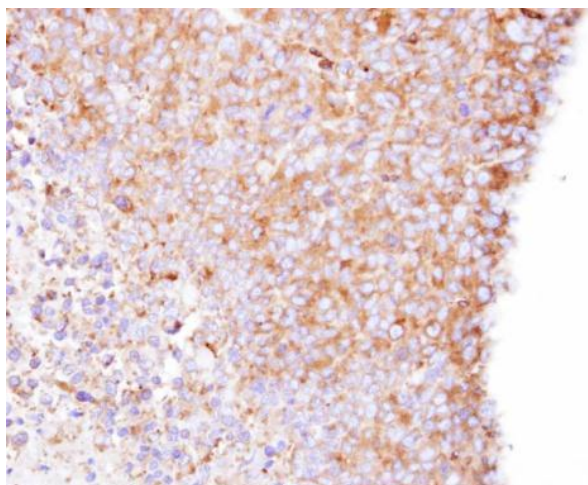
Product images:



Sample (30 ug whole cell lysate). A:293T. 10% SDS PAGE. TA308565 diluted at 1:1000



Sample (30 ug of whole cell lysate). A: NIH-3T3. 10% SDS PAGE. TA308565 diluted at 1:1000.



Immunohistochemical analysis of paraffin-embedded H1299 xenograft, using Coronin-1B (TA308565) antibody at 1:500 dilution.