

Product datasheet for **TA308562**

PSME3 Rabbit Polyclonal Antibody

Product data:

Product Type:	Primary Antibodies
Applications:	IF, IHC, WB
Recommended Dilution:	ICC/IF:1:100-1:1000; IHC:1:100-1:1000; WB:1:500-1:3000
Reactivity:	Human, Mouse (Predicted: Pig)
Host:	Rabbit
Isotype:	IgG
Clonality:	Polyclonal
Immunogen:	Recombinant fragment contain a sequence corresponding to a region within amino acids 1 and 254 of PSME3
Formulation:	0.1M Tris, 0.1M Glycine, 10% Glycerol (pH7). 0.01% Thimerosal was added as a preservative.
Concentration:	lot specific
Purification:	Purified by antigen-affinity chromatography.
Conjugation:	Unconjugated
Storage:	Store at -20°C as received.
Stability:	Stable for 12 months from date of receipt.
Predicted Protein Size:	30 kDa
Gene Name:	proteasome activator subunit 3
Database Link:	NP_005780 Entrez Gene 19192 Mouse Entrez Gene 10197 Human P61289



[View online »](#)

Background:

The 26S proteasome is a multicatalytic proteinase complex with a highly ordered structure composed of 2 complexes, a 20S core and a 19S regulator. The 20S core is composed of 4 rings of 28 non-identical subunits; 2 rings are composed of 7 alpha subunits and 2 rings are composed of 7 beta subunits. The 19S regulator is composed of a base, which contains 6 ATPase subunits and 2 non-ATPase subunits, and a lid, which contains up to 10 non-ATPase subunits. Proteasomes are distributed throughout eukaryotic cells at a high concentration and cleave peptides in an ATP/ubiquitin-dependent process in a non-lysosomal pathway. An essential function of a modified proteasome, the immunoproteasome, is the processing of class I MHC peptides. The immunoproteasome contains an alternate regulator, referred to as the 11S regulator or PA28, that replaces the 19S regulator. Three subunits (alpha, beta and gamma) of the 11S regulator have been identified. This gene encodes the gamma subunit of the 11S regulator. Six gamma subunits combine to form a homohexameric ring. Two transcript variants encoding different isoforms have been identified. [provided by RefSeq]

Synonyms:

HEL-S-283; Ki; PA28-gamma; PA28G; PA28gamma; REG-GAMMA

Note:

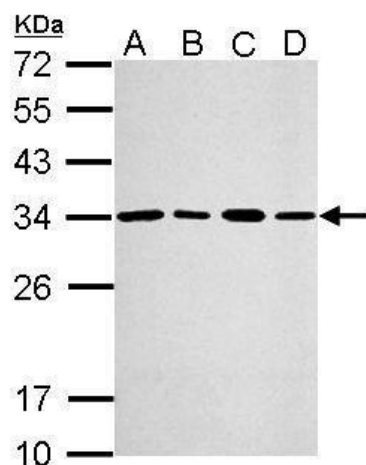
Seq homology of immunogen across species: Pig (100%)

Protein Families:

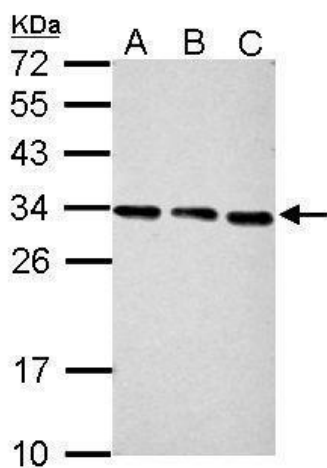
Stem cell - Pluripotency

Protein Pathways:

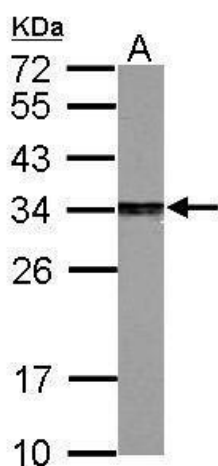
Antigen processing and presentation, Proteasome

Product images:


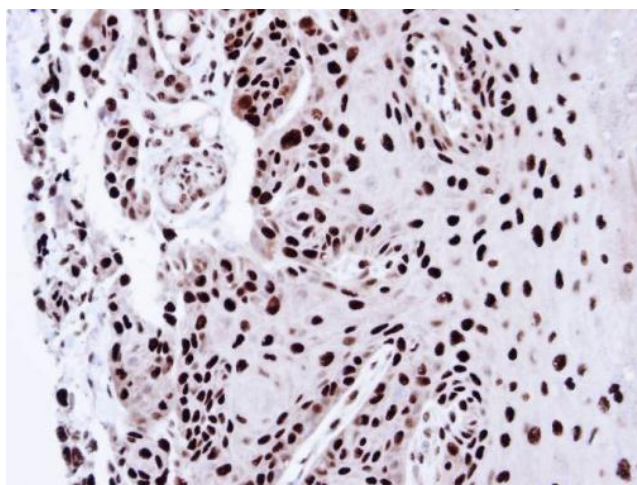
Sample (30 ug of whole cell lysate). A: A549. B: H1299. C: HCT116. D: MCF-7. 12% SDS PAGE. TA308562 diluted at 1:2000.



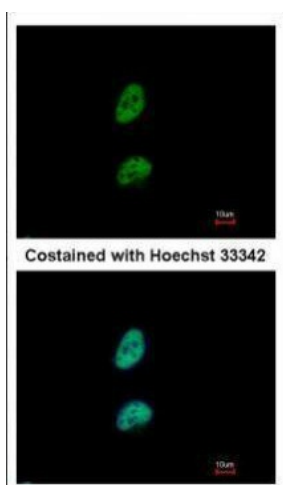
Sample (30 ug of whole cell lysate). A: NIH-3T3. B: JC. C: BCL-1. 12% SDS PAGE. TA308562 diluted at 1:2000.



Sample (30 ug of whole cell lysate). A: PC-12. 12% SDS PAGE. TA308562 diluted at 1:2000.



Immunohistochemical analysis of paraffin-embedded CA922 xenograft, using PSME3 (TA308562) antibody at 1:100 dilution.



Immunofluorescence analysis of paraformaldehyde-fixed HeLa, using PSME3 (TA308562) antibody at 1:500 dilution.