

Product datasheet for **TA308560**

GK2 Rabbit Polyclonal Antibody

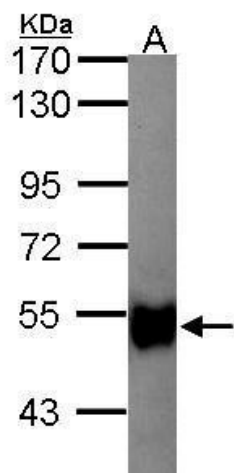
Product data:

Product Type:	Primary Antibodies
Applications:	IF, IHC, WB
Recommended Dilution:	ICC/IF:1:100-1:1000; IHC:1:100-1:1000; WB:1:500-1:3000
Reactivity:	Human (Predicted: Mouse, Monkey, Rat)
Host:	Rabbit
Isotype:	IgG
Clonality:	Polyclonal
Immunogen:	Recombinant fragment corresponding to a region within amino acids 67 and 338 of Glycerol kinase 2 (Uniprot ID#Q14410)
Formulation:	0.1M Tris, 0.1M Glycine, 10% Glycerol (pH7). 0.01% Thimerosal was added as a preservative.
Concentration:	lot specific
Purification:	Purified by antigen-affinity chromatography.
Conjugation:	Unconjugated
Storage:	Store at -20°C as received.
Stability:	Stable for 12 months from date of receipt.
Predicted Protein Size:	61 kDa
Gene Name:	glycerol kinase 2
Database Link:	NP_149991 Entrez Gene 14626 MouseEntrez Gene 289481 RatEntrez Gene 696635 MonkeyEntrez Gene 2712 Human Q14410
Synonyms:	GKP2; GKTA
Note:	Seq homology of immunogen across species: Mouse (88%), Monkey (98%), Rat (89%)
Protein Families:	Druggable Genome
Protein Pathways:	Glycerolipid metabolism, Metabolic pathways, PPAR signaling pathway

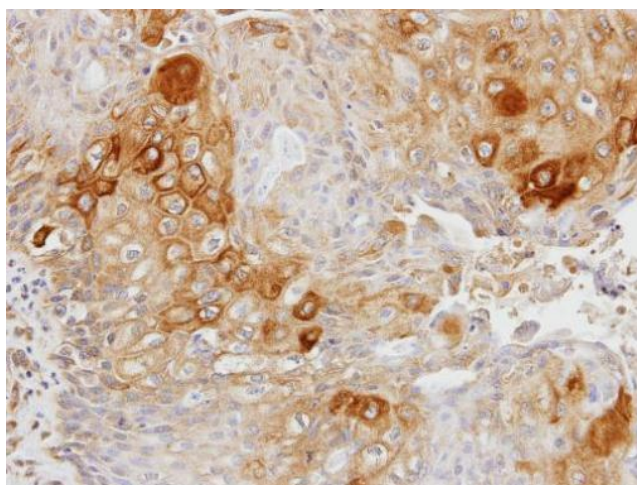


[View online »](#)

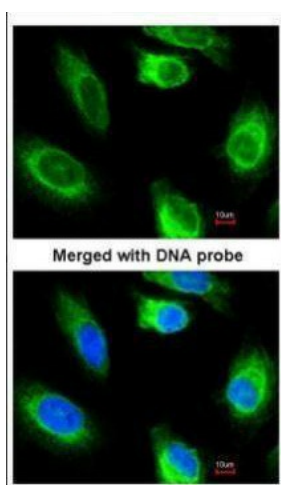
Product images:



Sample (30 ug of whole cell lysate). A: Hep G2. 7.5% SDS PAGE. glycerol kinase 2 antibody. TA308560 diluted at 1:1000.



Immunohistochemical analysis of paraffin-embedded OVCA xenograft, using Glycerol kinase 2 (TA308560) antibody at 1:100 dilution.



Immunofluorescence analysis of paraformaldehyde-fixed HeLa, using glycerol kinase 2 (TA308560) antibody at 1:200 dilution.