

Product datasheet for **TA308558**

NSMCE1 Rabbit Polyclonal Antibody

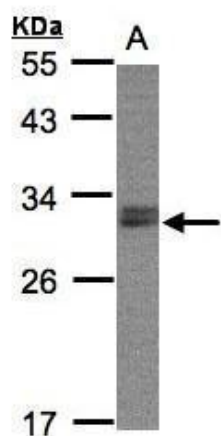
Product data:

Product Type:	Primary Antibodies
Applications:	IHC, WB
Recommended Dilution:	IHC:1:100-1:1000; WB:1:500-1:3000
Reactivity:	Human (Predicted: Mouse, Rat, Bovine)
Host:	Rabbit
Isotype:	IgG
Clonality:	Polyclonal
Immunogen:	Recombinant fragment corresponding to a region within amino acids 1 and 266 of NSMCE1 (Uniprot ID#Q8WV22)
Formulation:	0.1M Tris, 0.1M Glycine, 10% Glycerol (pH7). 0.01% Thimerosal was added as a preservative.
Concentration:	lot specific
Purification:	Purified by antigen-affinity chromatography.
Conjugation:	Unconjugated
Storage:	Store at -20°C as received.
Stability:	Stable for 12 months from date of receipt.
Predicted Protein Size:	31 kDa
Gene Name:	NSE1 homolog, SMC5-SMC6 complex component
Database Link:	NP_659547 Entrez Gene 67711 Mouse Entrez Gene 361645 Rat Entrez Gene 197370 Human Q8WV22
Synonyms:	NSE1
Note:	Seq homology of immunogen across species: Mouse (90%), Rat (92%), Bovine (90%)
Protein Families:	Druggable Genome

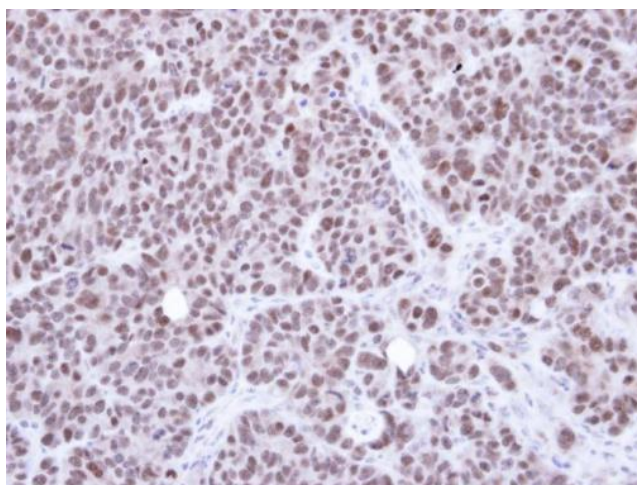


[View online »](#)

Product images:



Sample (30 ug whole cell lysate). A:Raji. 12% SDS PAGE. TA308558 diluted at 1:2000



Immunohistochemical analysis of paraffin-embedded SW480 xenograft, using NSMCE1 (TA308558) antibody at 1:500 dilution.