

## Product datasheet for **TA308557**

### BCCIP Rabbit Polyclonal Antibody

#### Product data:

Product Type:	Primary Antibodies
Applications:	IF, IHC, WB
Recommended Dilution:	ICC/IF:1:100-1:1000; IHC:1:100-1:1000; WB:1:500-1:3000
Reactivity:	Human
Host:	Rabbit
Isotype:	IgG
Clonality:	Polyclonal
Immunogen:	Synthetic peptide corresponding to a region within amino acids 181 and 273 of BCCIP (Uniprot ID#Q9P287)
Formulation:	0.1M Tris, 0.1M Glycine, 10% Glycerol (pH7). 0.01% Thimerosal was added as a preservative.
Concentration:	lot specific
Purification:	Purified by antigen-affinity chromatography.
Conjugation:	Unconjugated
Storage:	Store at -20°C as received.
Stability:	Stable for 12 months from date of receipt.
Predicted Protein Size:	36 kDa
Gene Name:	BRCA2 and CDKN1A interacting protein
Database Link:	<a href="#">NP_057651</a> <a href="#">Entrez Gene 56647 Human</a> <a href="#">Q9P287</a>



[View online »](#)

**Background:**

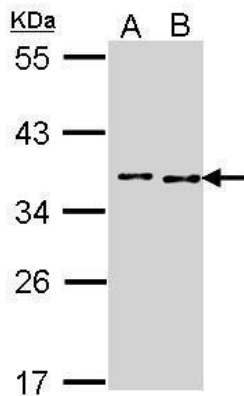
This gene product was isolated on the basis of its interaction with BRCA2 and p21 proteins. It is an evolutionarily conserved nuclear protein with multiple interacting domains. The N-terminal half shares moderate homology with regions of calmodulin and M-calpain, suggesting that it may also bind calcium. Functional studies indicate that this protein may be an important cofactor for BRCA2 in tumor suppression, and a modulator of CDK2 kinase activity via p21. This protein has also been implicated in the regulation of BRCA2 and RAD51 nuclear focus formation, double-strand break-induced homologous recombination, and cell cycle progression. Multiple transcript variants encoding different isoforms have been described for this gene. [provided by RefSeq]

**Synonyms:**

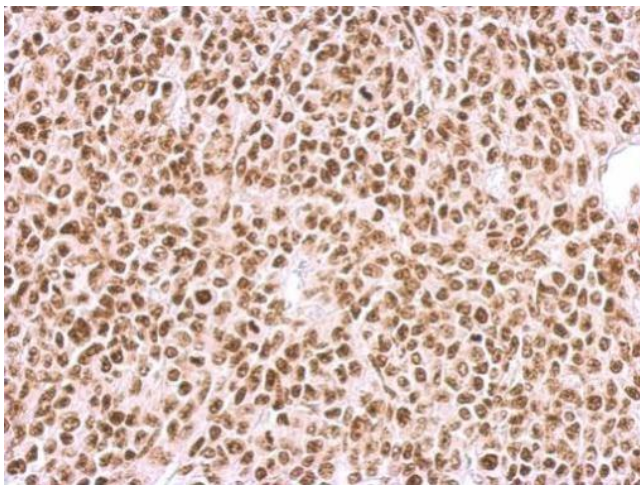
TOK-1; TOK1

**Protein Families:**

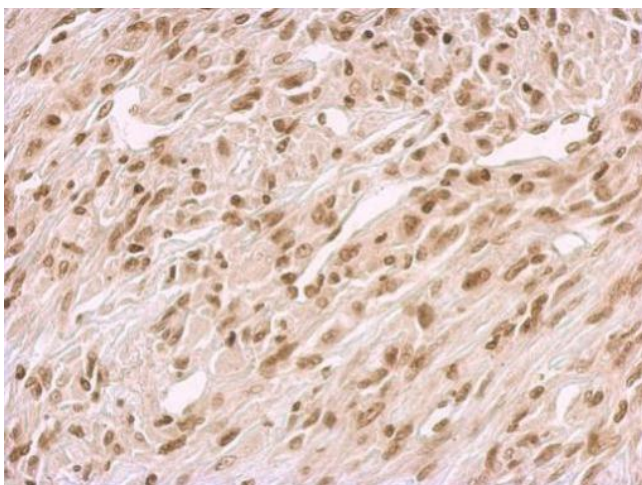
Druggable Genome, Stem cell - Pluripotency

**Product images:**

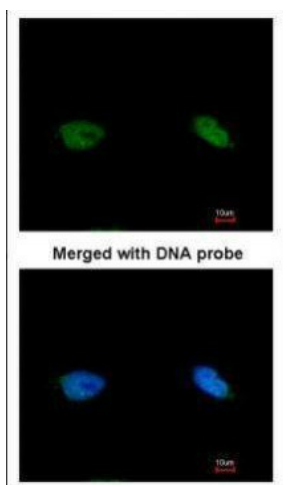
Sample (30 ug of whole cell lysate). A: A431. B: HeLa. 10% SDS PAGE. TA308557 diluted at 1:1000.



BCCIP antibody detects BCCIP protein at nucleus on BT483 xenograft by immunohistochemical analysis. Sample: Paraffin-embedded BT483 xenograft. BCCIP antibody (TA308557) dilution: 1:500.



BCCIP antibody detects BCCIP protein at nucleus on U373 xenograft by immunohistochemical analysis. Sample: Paraffin-embedded U373 xenograft. BCCIP antibody (TA308557) dilution: 1:500.



Immunofluorescence analysis of paraformaldehyde-fixed HeLa, using BCCIP (TA308557) antibody at 1:200 dilution.