

Product datasheet for **TA308556**

APBB3 Rabbit Polyclonal Antibody

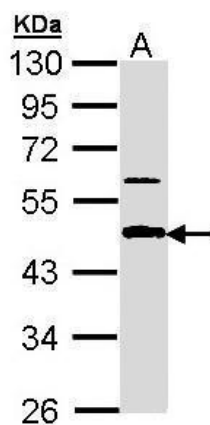
Product data:

Product Type:	Primary Antibodies
Applications:	WB
Recommended Dilution:	WB:1:500-1:3000
Reactivity:	Human (Predicted: Mouse, Bovine)
Host:	Rabbit
Isotype:	IgG
Clonality:	Polyclonal
Immunogen:	Recombinant fragment corresponding to a region within amino acids 242 and 486 of APBB3 (Uniprot ID#O95704)
Formulation:	0.1M Tris, 0.1M Glycine, 20% Glycerol (pH7). 0.01% Thimerosal was added as a preservative.
Concentration:	lot specific
Purification:	Purified by antigen-affinity chromatography.
Conjugation:	Unconjugated
Storage:	Store at -20°C as received.
Stability:	Stable for 12 months from date of receipt.
Predicted Protein Size:	52 kDa
Gene Name:	amyloid beta precursor protein binding family B member 3
Database Link:	NP_573420 Entrez Gene 225372 Mouse Entrez Gene 10307 Human O95704
Background:	The protein encoded by this gene is a member of the APBB protein family. It is found in the cytoplasm and binds to the intracellular domain of the Alzheimer's disease beta-amyloid precursor protein (APP) as well as to other APP-like proteins. It is thought that the protein encoded by this gene may modulate the internalization of APP. Multiple transcript variants encoding several different isoforms have been found for this gene. [provided by RefSeq]
Synonyms:	FE65L2; SRA
Note:	Seq homology of immunogen across species: Mouse (93%), Bovine (94%)



[View online »](#)

Product images:



Sample (30 ug of whole cell lysate). A: A431. 10% SDS PAGE. TA308556 diluted at 1:1000.