

Product datasheet for **TA308555**

Transcription factor 25 (TCF25) Rabbit Polyclonal Antibody

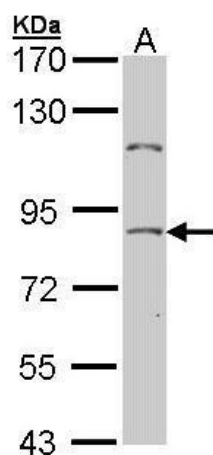
Product data:

Product Type:	Primary Antibodies
Applications:	IF, IHC, WB
Recommended Dilution:	ICC/IF:1:100-1:1000; IHC:1:100-1:1000; WB:1:500-1:3000
Reactivity:	Human, Mouse (Predicted: Bovine)
Host:	Rabbit
Isotype:	IgG
Clonality:	Polyclonal
Immunogen:	Recombinant fragment corresponding to a region within amino acids 427 and 676 of NULP1 (Uniprot ID#Q9BQ70)
Formulation:	0.1M Tris, 0.1M Glycine, 10% Glycerol (pH7). 0.01% Thimerosal was added as a preservative.
Concentration:	lot specific
Purification:	Purified by antigen-affinity chromatography.
Conjugation:	Unconjugated
Storage:	Store at -20°C as received.
Stability:	Stable for 12 months from date of receipt.
Predicted Protein Size:	77 kDa
Gene Name:	transcription factor 25
Database Link:	NP_055787 Entrez Gene 66855 Mouse Entrez Gene 22980 Human Q9BQ70
Background:	TCF25 is a member of the basic helix-loop-helix (bHLH) family of transcription factors that are important in embryonic development (Steen and Lindholm, 2008 [PubMed 18068114]). [supplied by OMIM]
Synonyms:	FKSG26; hKIAA1049; Hulp1; NULP1; PRO2620
Note:	Seq homology of immunogen across species: Bovine (90%)

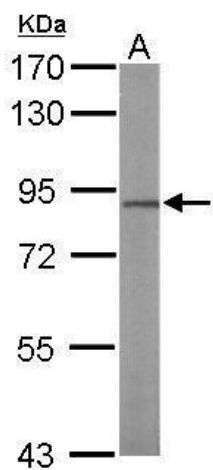


[View online »](#)

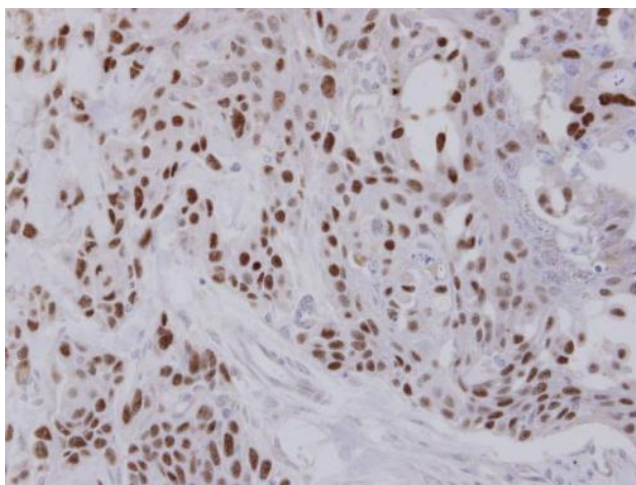
Product images:



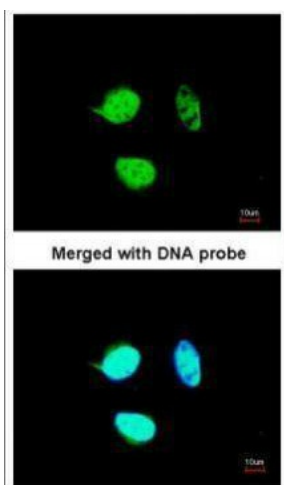
Sample (30 ug of whole cell lysate). A: HeLa. 7.5% SDS PAGE. TA308555 diluted at 1:500.



Sample (50 ug of whole cell lysate). A: Mouse brain. 7.5% SDS PAGE. TA308555 diluted at 1:1000.



Immunohistochemical analysis of paraffin-embedded FaDu xenograft, using NULP1 (TA308555) antibody at 1:100 dilution.



Immunofluorescence analysis of paraformaldehyde-fixed HeLa, using NULP1 (TA308555) antibody at 1:200 dilution.