

Product datasheet for **TA308553**

ETFB Rabbit Polyclonal Antibody

Product data:

Product Type:	Primary Antibodies
Applications:	IF, WB
Recommended Dilution:	ICC/IF:1:100-1:1000; WB:1:1000-1:10000
Reactivity:	Human, Mouse (Predicted: Monkey, Pig, Rat, Bovine)
Host:	Rabbit
Isotype:	IgG
Clonality:	Polyclonal
Immunogen:	Recombinant fragment corresponding to a region within amino acids 1 and 255 of Beta ETF (Uniprot ID#P38117)
Formulation:	0.1M Tris, 0.1M Glycine, 10% Glycerol (pH7). 0.01% Thimerosal was added as a preservative.
Concentration:	lot specific
Purification:	Purified by antigen-affinity chromatography.
Conjugation:	Unconjugated
Storage:	Store at -20°C as received.
Stability:	Stable for 12 months from date of receipt.
Predicted Protein Size:	28 kDa
Gene Name:	electron transfer flavoprotein beta subunit
Database Link:	NP_001014763 Entrez Gene 110826 MouseEntrez Gene 292845 RatEntrez Gene 719606 MonkeyEntrez Gene 2109 Human P38117
Background:	This gene encodes electron-transfer-flavoprotein, beta polypeptide, which shuttles electrons between primary flavoprotein dehydrogenases involved in mitochondrial fatty acid and amino acid catabolism and the membrane-bound electron transfer flavoprotein ubiquinone oxidoreductase. The gene deficiencies have been implicated in type II glutaricaciduria. Alternatively spliced transcript variants have been found for this gene. [provided by RefSeq]
Synonyms:	FP585; MADD

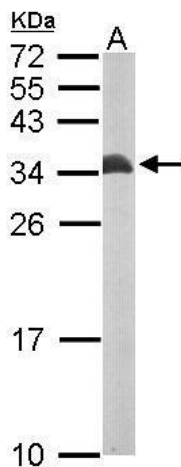


[View online »](#)

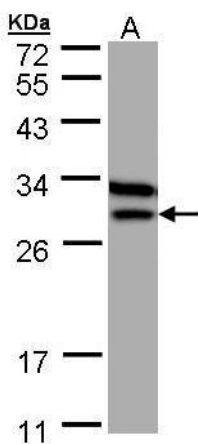
Note: Seq homology of immunogen across species: Monkey (98%), Pig (95%), Rat (92%), Bovine (96%)

Protein Families: Druggable Genome

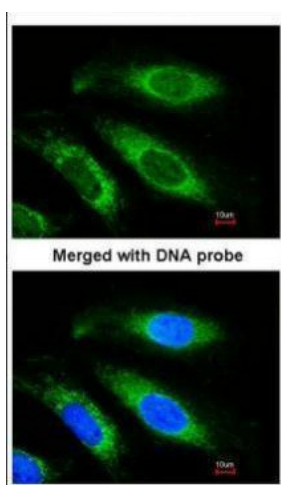
Product images:



Sample (50 ug of whole cell lysate). A: mouse brain. 12% SDS PAGE. TA308553 diluted at 1:10000.



Sample (30 ug of whole cell lysate). A: MOLT4. 12% SDS PAGE. TA308553 diluted at 1:1000



Immunofluorescence analysis of paraformaldehyde-fixed HeLa, using Beta-ETF (TA308553) antibody at 1:200 dilution.