

Product datasheet for **TA308551**

Meckelin (TMEM67) Rabbit Polyclonal Antibody

Product data:

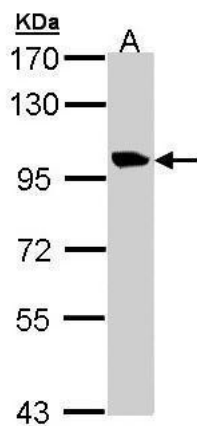
Product Type:	Primary Antibodies
Applications:	WB
Recommended Dilution:	WB:1:500-1:3000
Reactivity:	Human (Predicted: Mouse, Rat, Bovine)
Host:	Rabbit
Isotype:	IgG
Clonality:	Polyclonal
Immunogen:	Recombinant fragment corresponding to a region within amino acids 231 and 510 of meckelin isoform 1 (Uniprot ID#Q5HYA8)
Formulation:	0.1M Tris, 0.1M Glycine, 10% Glycerol (pH7). 0.01% Thimerosal was added as a preservative.
Concentration:	lot specific
Purification:	Purified by antigen-affinity chromatography.
Conjugation:	Unconjugated
Storage:	Store at -20°C as received.
Stability:	Stable for 12 months from date of receipt.
Predicted Protein Size:	112 kDa
Gene Name:	transmembrane protein 67
Database Link:	NP_001135773 Entrez Gene 313067 RatEntrez Gene 329795 MouseEntrez Gene 91147 Human Q5HYA8
Background:	The protein encoded by this gene localizes to the primary cilium and to the plasma membrane. The gene functions in centriole migration to the apical membrane and formation of the primary cilium. Multiple transcript variants encoding different isoforms have been found for this gene. Defects in this gene are a cause of Meckel syndrome type 3 (MKS3) and Joubert syndrome type 6 (JBTS6). [provided by RefSeq]
Synonyms:	JBTS6; MECKELIN; MKS3; NPHP11; TNEM67
Note:	Seq homology of immunogen across species: Mouse (82%), Rat (81%), Bovine (88%)



[View online »](#)

Protein Families: Transmembrane

Product images:



Sample (30 ug of whole cell lysate). A: H1299.
7.5% SDS PAGE. TA308551 diluted at 1:1000