

Product datasheet for **TA308547**

Ornithine Decarboxylase (ODC1) Rabbit Polyclonal Antibody

Product data:

Product Type:	Primary Antibodies
Applications:	WB
Recommended Dilution:	WB:1:500-1:3000
Reactivity:	Human (Predicted: Mouse, Chicken, Monkey, Rat, Bovine)
Host:	Rabbit
Isotype:	IgG
Clonality:	Polyclonal
Immunogen:	Recombinant fragment corresponding to a region within amino acids 180 and 461 of ODC (Uniprot ID#P11926)
Formulation:	1XPBS, 20% Glycerol (pH7). 0.025% ProClin 300 was added as a preservative.
Concentration:	lot specific
Purification:	Purified by antigen-affinity chromatography.
Conjugation:	Unconjugated
Storage:	Store at -20°C as received.
Stability:	Stable for 12 months from date of receipt.
Predicted Protein Size:	51 kDa
Gene Name:	ornithine decarboxylase 1
Database Link:	NP_002530 Entrez Gene 18263 MouseEntrez Gene 24609 RatEntrez Gene 695625 MonkeyEntrez Gene 4953 Human P11926
Background:	This gene encodes the rate-limiting enzyme of the polyamine biosynthesis pathway which catalyzes ornithine to putrescine. The activity level for the enzyme varies in response to growth-promoting stimuli and exhibits a high turnover rate in comparison to other mammalian proteins. Originally localized to both chromosomes 2 and 7, the gene encoding this enzyme has been determined to be located on 2p25, with a pseudogene located on 7q31-qter. [provided by RefSeq]
Synonyms:	ODC



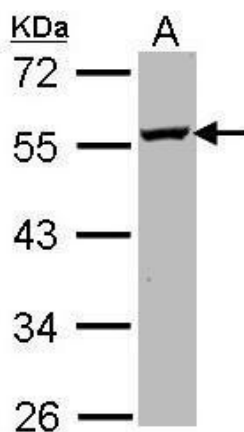
[View online »](#)

Note: Seq homology of immunogen across species: Mouse (91%), Chicken (85%), Monkey (98%), Rat (91%), Bovine (93%)

Protein Families: Druggable Genome

Protein Pathways: Arginine and proline metabolism, Glutathione metabolism, Metabolic pathways

Product images:



Sample (30 ug of whole cell lysate). A: Molt-4.
10% SDS PAGE. TA308547 diluted at 1:1000.