

## Product datasheet for **TA308546**

### DNase I (DNASE1) Rabbit Polyclonal Antibody

#### Product data:

Product Type:	Primary Antibodies
Applications:	IF, WB
Recommended Dilution:	ICC/IF:1:100-1:1000; WB:1:500-1:3000
Reactivity:	Human (Predicted: Dog)
Host:	Rabbit
Isotype:	IgG
Clonality:	Polyclonal
Immunogen:	Recombinant fragment corresponding to a region within amino acids 1 and 282 of DNase I (Uniprot ID#P24855)
Formulation:	1XPBS, 20% Glycerol (pH7). 0.025% ProClin 300 was added as a preservative.
Concentration:	lot specific
Purification:	Purified by antigen-affinity chromatography.
Conjugation:	Unconjugated
Storage:	Store at -20°C as received.
Stability:	Stable for 12 months from date of receipt.
Predicted Protein Size:	31 kDa
Gene Name:	deoxyribonuclease I
Database Link:	<a href="#">NP_005214</a> <a href="#">Entrez Gene 403413 Dog</a> <a href="#">Entrez Gene 1773 Human</a> <a href="#">P24855</a>



[View online »](#)

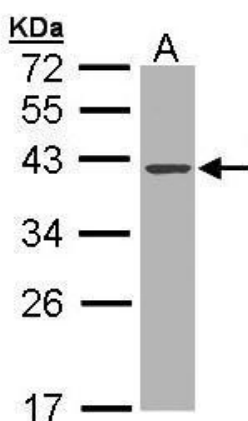
**Background:** This gene encodes a member of the DNase family. This protein is stored in the zymogen granules of the nuclear envelope and functions by cleaving DNA in an endonucleolytic manner. At least six autosomal codominant alleles have been characterized, DNASE1\*1 through DNASE1\*6, and the sequence of DNASE1\*2 represented in this record. Mutations in this gene have been associated with systemic lupus erythematosus (SLE), an autoimmune disease. A recombinant form of this protein is used to treat the one of the symptoms of cystic fibrosis by hydrolyzing the extracellular DNA in sputum and reducing its viscosity. Alternate transcriptional splice variants of this gene have been observed but have not been thoroughly characterized. [provided by RefSeq]

**Synonyms:** DNL1; DRNI

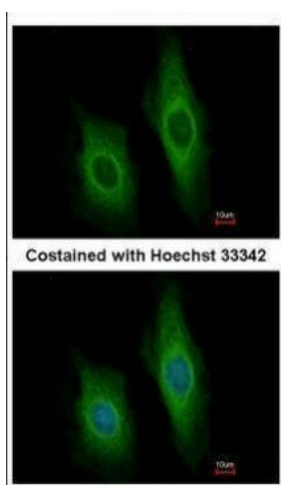
**Note:** Seq homology of immunogen across species: Dog (81%)

**Protein Families:** Druggable Genome, Secreted Protein, Transmembrane

**Product images:**



Sample (30 ug of whole cell lysate). A: MOLT4.  
10% SDS PAGE. TA308546 diluted at 1:1000



Immunofluorescence analysis of methanol-fixed HeLa, using DNase I (TA308546) antibody at 1:200 dilution.