

## Product datasheet for **TA308545**

### XRCC3 Rabbit Polyclonal Antibody

#### Product data:

Product Type:	Primary Antibodies
Applications:	IF, WB
Recommended Dilution:	ICC/IF:1:100-1:1000; WB:1:500-1:3000
Reactivity:	Human
Host:	Rabbit
Isotype:	IgG
Clonality:	Polyclonal
Immunogen:	Recombinant fragment corresponding to a region within amino acids 202 and 346 of XRCC3 (Uniprot ID#O43542)
Formulation:	0.1M Tris, 0.1M Glycine, 10% Glycerol (pH7). 0.01% Thimerosal was added as a preservative.
Concentration:	lot specific
Purification:	Purified by antigen-affinity chromatography.
Conjugation:	Unconjugated
Storage:	Store at -20°C as received.
Stability:	Stable for 12 months from date of receipt.
Predicted Protein Size:	38 kDa
Gene Name:	X-ray repair complementing defective repair in Chinese hamster cells 3
Database Link:	<a href="#">NP_001093589</a> <a href="#">Entrez Gene 7517 Human O43542</a>
Background:	This gene encodes a member of the RecA/Rad51-related protein family that participates in homologous recombination to maintain chromosome stability and repair DNA damage. This gene functionally complements Chinese hamster irs1SF, a repair-deficient mutant that exhibits hypersensitivity to a number of different DNA-damaging agents and is chromosomally unstable. A rare microsatellite polymorphism in this gene is associated with cancer in patients of varying radiosensitivity. Alternatively spliced transcript variants encoding the same protein have been identified. [provided by RefSeq]
Synonyms:	CMM6

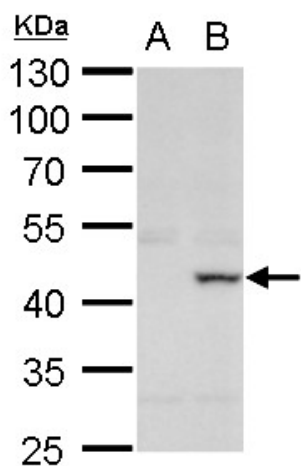


[View online »](#)

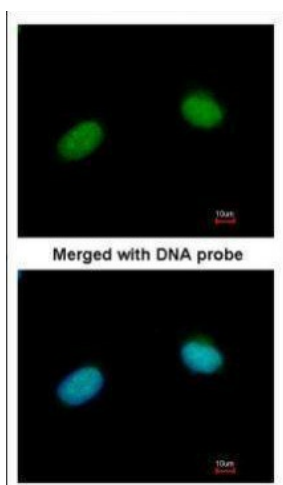
Protein Families: Druggable Genome

Protein Pathways: Homologous recombination

### Product images:



XRCC3 antibody detects XRCC3 protein by western blot analysis. A. 30 µg 293T whole cell lysate/extract. B. 30 µg whole cell lysate/extract of DDDDK-human XRCC3-transfected 293T cells. 10 % SDS-PAGE. XRCC3 antibody (TA308545) dilution: 1:1000



Immunofluorescence analysis of paraformaldehyde-fixed HeLa, using XRCC3 (TA308545) antibody at 1:200 dilution.