

## Product datasheet for **TA308542**

### **SERPING1 Rabbit Polyclonal Antibody**

#### **Product data:**

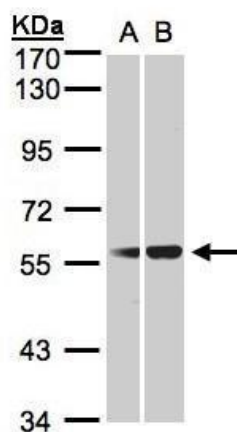
<b>Product Type:</b>	Primary Antibodies
<b>Applications:</b>	IHC, WB
<b>Recommended Dilution:</b>	IHC:1:100-1:1000; WB:1:500-1:3000
<b>Reactivity:</b>	Human
<b>Host:</b>	Rabbit
<b>Isotype:</b>	IgG
<b>Clonality:</b>	Polyclonal
<b>Immunogen:</b>	Recombinant fragment corresponding to a region within amino acids 77 and 420 of C1 inhibitor (Uniprot ID#P05155)
<b>Formulation:</b>	0.1M Tris, 0.1M Glycine, 10% Glycerol (pH7). 0.01% Thimerosal was added as a preservative.
<b>Concentration:</b>	lot specific
<b>Purification:</b>	Purified by antigen-affinity chromatography.
<b>Conjugation:</b>	Unconjugated
<b>Storage:</b>	Store at -20°C as received.
<b>Stability:</b>	Stable for 12 months from date of receipt.
<b>Predicted Protein Size:</b>	55 kDa
<b>Gene Name:</b>	serpin family G member 1
<b>Database Link:</b>	<a href="#">NP_001027466</a> <a href="#">Entrez Gene 710 Human P05155</a>
<b>Background:</b>	This gene encodes a highly glycosylated plasma protein involved in the regulation of the complement cascade. Its protein inhibits activated C1r and C1s of the first complement component and thus regulates complement activation. Deficiency of this protein is associated with hereditary angioneurotic oedema (HANE). Alternative splicing results in multiple transcript variants encoding the same isoform. [provided by RefSeq]
<b>Synonyms:</b>	C1IN; C1INH; C1NH; HAE1; HAE2
<b>Protein Families:</b>	Druggable Genome, Secreted Protein



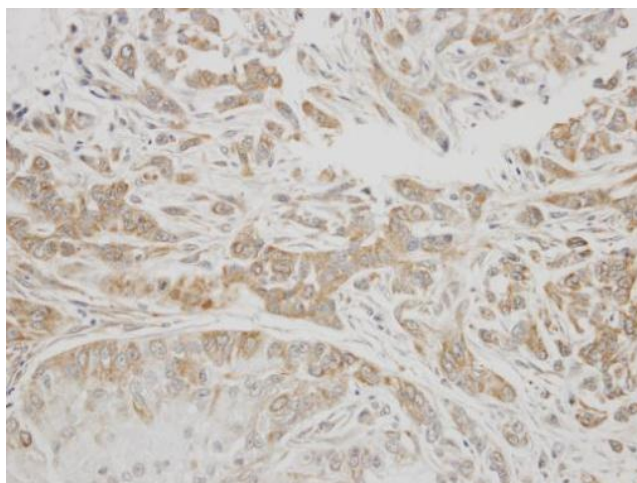
[View online »](#)

Protein Pathways: Complement and coagulation cascades

### Product images:



Sample (30 ug whole cell lysate). A:293T. B:HeLa S3. 7.5% SDS PAGE. TA308542 diluted at 1:1000



Immunohistochemical analysis of paraffin-embedded A549 xenograft, using C1 inhibitor (TA308542) antibody at 1:300 dilution.