

Product datasheet for **TA308540**

SOX13 Rabbit Polyclonal Antibody

Product data:

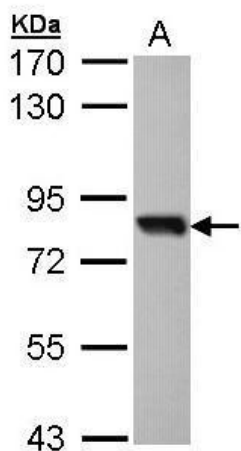
Product Type:	Primary Antibodies
Applications:	IF, IP, WB
Recommended Dilution:	ICC/IF:1:100-1:1000; WB:1:500-1:3000
Reactivity:	Human (Predicted: Mouse, Rat)
Host:	Rabbit
Isotype:	IgG
Clonality:	Polyclonal
Immunogen:	Recombinant fragment corresponding to a region within amino acids 75 and 520 of SOX13 (Uniprot ID#Q9UN79)
Formulation:	0.1M Tris, 0.1M Glycine, 10% Glycerol (pH7). 0.01% Thimerosal was added as a preservative.
Concentration:	lot specific
Purification:	Purified by antigen-affinity chromatography.
Conjugation:	Unconjugated
Storage:	Store at -20°C as received.
Stability:	Stable for 12 months from date of receipt.
Predicted Protein Size:	69 kDa
Gene Name:	SRY-box 13
Database Link:	NP_005677 Entrez Gene 20668 MouseEntrez Gene 289026 RatEntrez Gene 9580 Human Q9UN79
Background:	This gene encodes a member of the SOX (SRY-related HMG-box) family of transcription factors involved in the regulation of embryonic development and in the determination of cell fate. The encoded protein may act as a transcriptional regulator after forming a protein complex with other proteins. It has also been determined to be a type-1 diabetes autoantigen, also known as islet cell antibody 12. [provided by RefSeq]
Synonyms:	ICA12; Sox-13
Note:	Seq homology of immunogen across species: Mouse (94%), Rat (93%)



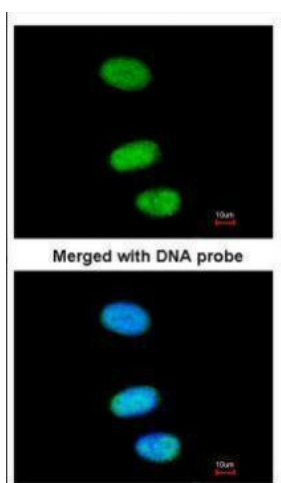
[View online »](#)

Protein Families: Transcription Factors

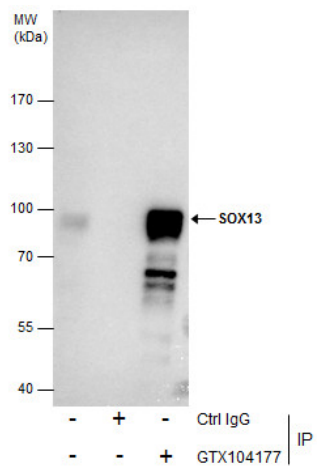
Product images:



Sample (30 ug of whole cell lysate). A: Molt-4.
7.5% SDS PAGE. TA308540 diluted at 1:1000.



Immunofluorescence analysis of
paraformaldehyde-fixed HeLa, using SOX13
(TA308540) antibody at 1:200 dilution.



Immunoprecipitation of SOX13 protein from NT2D1 whole cell extracts using 5 ug of SOX13 antibody [N1C3] (TA308540). Western blot analysis was performed using SOX13 antibody [N1C3] (TA308540). An anti-rabbit IgG was used as a secondary reagent.