

## Product datasheet for **TA308537**

### CD11c (ITGAX) Rabbit Polyclonal Antibody

#### Product data:

|                         |   |
|-------------------------|---|
| Product Type:           | Primary Antibodies  |
| Applications:           | WB  |
| Recommended Dilution:   | WB:1:500-1:3000   |
| Reactivity:             | Human   |
| Host:                   | Rabbit  |
| Isotype:                | IgG   |
| Clonality:              | Polyclonal  |
| Immunogen:              | Recombinant fragment contain a sequence corresponding to a region within amino acids 1 and 168 of CD11c (Uniprot ID#P20702)   |
| Formulation:            | 0.1M Tris, 0.1M Glycine, 10% Glycerol (pH7). 0.01% Thimerosal was added as a preservative.  |
| Concentration:          | lot specific  |
| Purification:           | Purified by antigen-affinity chromatography.  |
| Conjugation:            | Unconjugated  |
| Storage:                | Store at -20°C as received.   |
| Stability:              | Stable for 12 months from date of receipt.  |
| Predicted Protein Size: | 128 kDa   |
| Gene Name:              | integrin subunit alpha X  |
| Database Link:          | <a href="#">NP_000878</a><br><a href="#">Entrez Gene 3687 Human P20702</a>  |
| Background:             | This gene encodes the integrin alpha X chain protein. Integrins are heterodimeric integral membrane proteins composed of an alpha chain and a beta chain. This protein combines with the beta 2 chain (ITGB2) to form a leukocyte-specific integrin referred to as inactivated-C3b (iC3b) receptor 4 (CR4). The alpha X beta 2 complex seems to overlap the properties of the alpha M beta 2 integrin in the adherence of neutrophils and monocytes to stimulated endothelium cells, and in the phagocytosis of complement coated particles. [provided by RefSeq] |
| Synonyms:               | CD11C; SLEB6  |

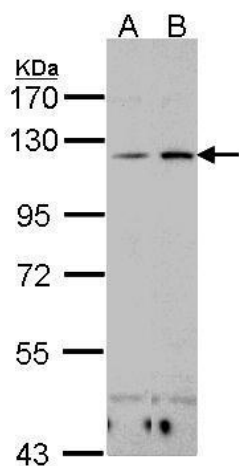


[View online »](#)

Protein Families: Druggable Genome, Transmembrane

Protein Pathways: Regulation of actin cytoskeleton

### Product images:



Sample (30 ug whole cell lysate). A:H1299. B:Hep G2. 7.5% SDS PAGE. TA308537 diluted at 1:1000