

Product datasheet for **TA308536**

A RAF (ARAF) Rabbit Polyclonal Antibody

Product data:

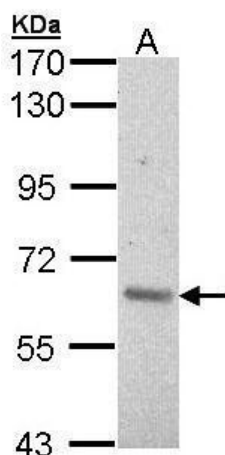
Product Type:	Primary Antibodies
Applications:	IF, IHC, WB
Recommended Dilution:	ICC/IF:1:100-1:1000; IHC:1:100-1:1000; WB:1:500-1:3000
Reactivity:	Human, Mouse (Predicted: Pig, Rat, Zebrafish, Bovine)
Host:	Rabbit
Isotype:	IgG
Clonality:	Polyclonal
Immunogen:	Recombinant fragment corresponding to a region within amino acids 371 and 554 of A-RAF (Uniprot ID#P10398)
Formulation:	0.1M Tris, 0.1M Glycine, 10% Glycerol (pH7). 0.01% Thimerosal was added as a preservative.
Concentration:	lot specific
Purification:	Purified by antigen-affinity chromatography.
Conjugation:	Unconjugated
Storage:	Store at -20°C as received.
Stability:	Stable for 12 months from date of receipt.
Predicted Protein Size:	68 kDa
Gene Name:	A-Raf proto-oncogene, serine/threonine kinase
Database Link:	NP_001645 Entrez Gene 11836 MouseEntrez Gene 64363 RatEntrez Gene 369 Human P10398
Synonyms:	A-RAF; ARAF1; PKS2; RAFA1
Note:	Seq homology of immunogen across species: Pig (99%), Rat (99%), Zebrafish (85%), Bovine (99%)
Protein Families:	Druggable Genome, Protein Kinase



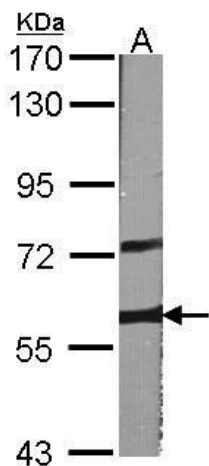
[View online »](#)

Protein Pathways:

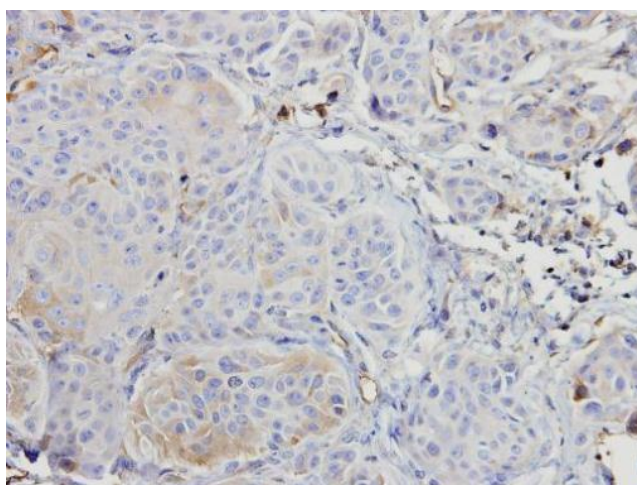
Acute myeloid leukemia, Bladder cancer, Chronic myeloid leukemia, Colorectal cancer, Endometrial cancer, ErbB signaling pathway, Glioma, Insulin signaling pathway, Long-term depression, Long-term potentiation, Melanoma, Natural killer cell mediated cytotoxicity, Non-small cell lung cancer, Pancreatic cancer, Pathways in cancer, Progesterone-mediated oocyte maturation, Prostate cancer, Regulation of actin cytoskeleton, Renal cell carcinoma, Vascular smooth muscle contraction

Product images:


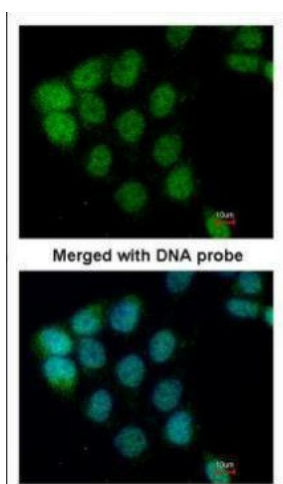
Sample (30 ug of whole cell lysate). A: HeLa. 7.5% SDS PAGE. TA308536 diluted at 1:1000.



Sample (30 ug of whole cell lysate). A:NIH-3T3. 7.5% SDS PAGE. TA308536 diluted at 1:1000.



Immunohistochemical analysis of paraffin-embedded Cal27 xenograft, using ARAF (TA308536) antibody at 1:500 dilution.



Immunofluorescence analysis of paraformaldehyde-fixed A431, using ARAF (TA308536) antibody at 1:200 dilution.