

Product datasheet for **TA308535**

PADI4 Rabbit Polyclonal Antibody

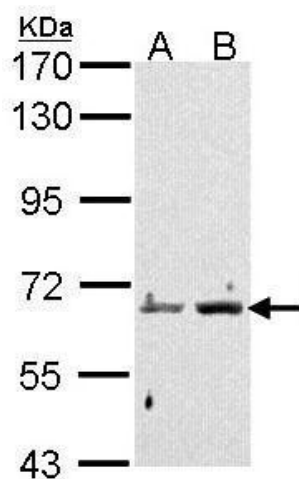
Product data:

Product Type:	Primary Antibodies
Applications:	IF, IHC, WB
Recommended Dilution:	ICC/IF:1:100-1:1000; IHC:1:100-1:1000; WB:1:500-1:3000
Reactivity:	Human
Host:	Rabbit
Isotype:	IgG
Clonality:	Polyclonal
Immunogen:	Recombinant fragment corresponding to a region within amino acids 326 and 611 of PAD4 (Uniprot ID#Q9UM07)
Formulation:	1XPBS, 1% BSA, 20% Glycerol (pH7). 0.025% ProClin 300 was added as a preservative.
Concentration:	lot specific
Purification:	Purified by antigen-affinity chromatography.
Conjugation:	Unconjugated
Storage:	Store at -20°C as received.
Stability:	Stable for 12 months from date of receipt.
Predicted Protein Size:	74 kDa
Gene Name:	peptidyl arginine deiminase 4
Database Link:	NP_036519 Entrez Gene 23569 Human Q9UM07
Background:	This gene is a member of a gene family which encodes enzymes responsible for the conversion of arginine residues to citrulline residues. This gene may play a role in granulocyte and macrophage development leading to inflammation and immune response. [provided by RefSeq]
Synonyms:	PAD; PAD4; PADI5; PDI4; PDI5

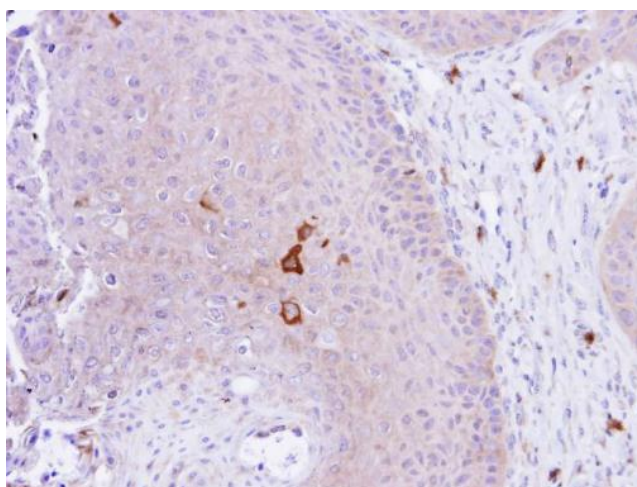


[View online »](#)

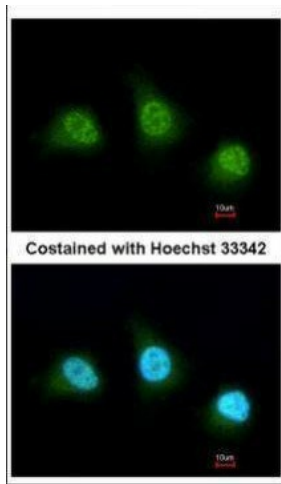
Product images:



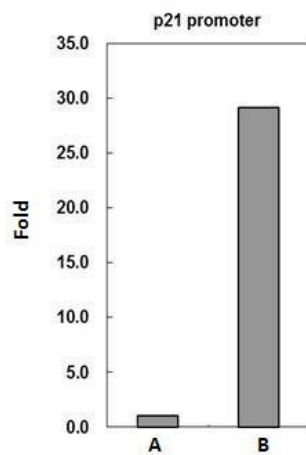
Sample (30 ug of whole cell lysate). A: HeLa. B: Hep G2. 7.5% SDS PAGE. TA308535 diluted at 1:1000.



Immunohistochemical analysis of paraffin-embedded Cal27 xenograft, using PADI4 (TA308535) antibody at 1:100 dilution.



Immunofluorescence analysis of paraformaldehyde-fixed HeLa, using PADI4 (TA308535) antibody at 1:200 dilution.



PADI4 antibody immunoprecipitates PADI4 protein-DNA complex in ChIP experiments. ChIP Sample: 293T whole cell lysate/extract A. 5 ug preimmune rabbit IgG. B. 5 ug of PADI4 antibody (TA308535). The precipitated DNA was detected by PCR with primer set target