

## Product datasheet for **TA308534**

### alpha Glucosidase II (GANAB) Rabbit Polyclonal Antibody

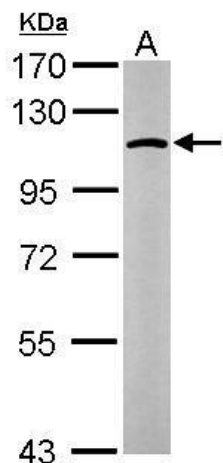
#### Product data:

Product Type:	Primary Antibodies
Applications:	IF, IHC, WB
Recommended Dilution:	ICC/IF:1:100-1:1000; IHC:1:100-1:1000; WB:1:500-1:3000
Reactivity:	Human, Mouse
Host:	Rabbit
Isotype:	IgG
Clonality:	Polyclonal
Immunogen:	Recombinant protein fragment contain a sequence corresponding to a region within amino acids 47 and 251 of alpha Glucosidase II
Formulation:	0.1M Tris, 0.1M Glycine, 10% Glycerol (pH7). 0.01% Thimerosal was added as a preservative.
Concentration:	lot specific
Purification:	Purified by antigen-affinity chromatography.
Conjugation:	Unconjugated
Storage:	Store at -20°C as received.
Stability:	Stable for 12 months from date of receipt.
Predicted Protein Size:	109 kDa
Gene Name:	glucosidase II alpha subunit
Database Link:	<a href="#">NP_938149</a> <a href="#">Entrez Gene 14376 Mouse</a> <a href="#">Entrez Gene 23193 Human</a> <a href="#">Q14697</a>
Synonyms:	G2AN; GIIA; GLUII; PKD3
Protein Families:	Druggable Genome, Transmembrane
Protein Pathways:	Metabolic pathways, N-Glycan biosynthesis

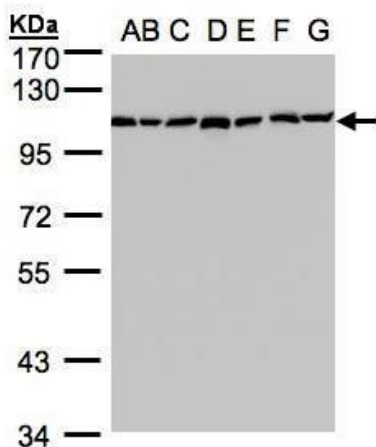


[View online »](#)

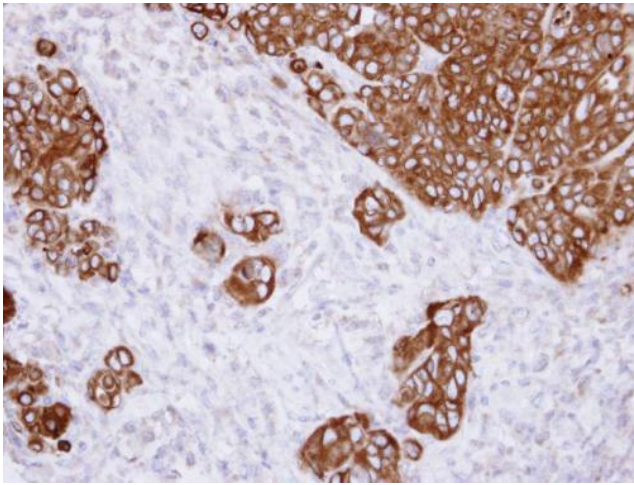
Product images:



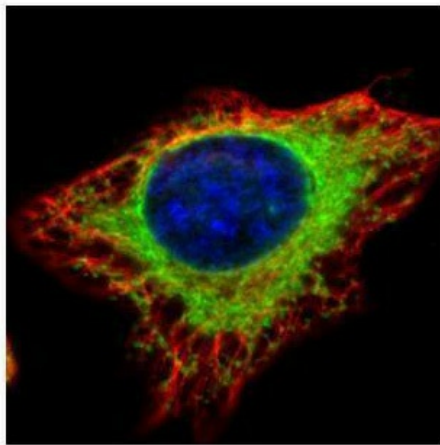
Sample (50 ug of whole cell lysate). A: Mouse brain. 7.5% SDS PAGE. TA308534 diluted at 1:1000.



Sample (30 ug whole cell lysate). A: 293T. B: A431. C: H1299. D: HeLa S3. E: Hep G2. F: MOLT4. G: Raji. 7.5% SDS PAGE. TA308534 diluted at 1:1000



Immunohistochemical analysis of paraffin-embedded SW480 xenograft, using alpha Glucosidase II (TA308534) antibody at 1:500 dilution.



Confocal immunofluorescence analysis (Olympus FV10i) of methanol-fixed HeLa, using alpha Glucosidase II (TA308534) antibody (Green) at 1:500 dilution. Alpha-tubulin filaments were labeled with anti-alpha tubulin antibody (Red) at 1:2000.