

Product datasheet for **TA308532**

RPB2 (POLR2B) Rabbit Polyclonal Antibody

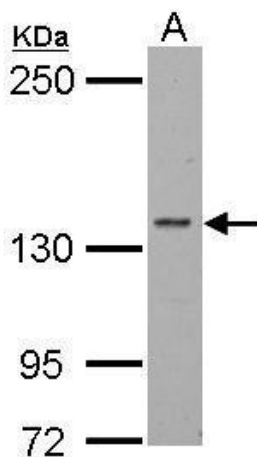
Product data:

Product Type:	Primary Antibodies
Applications:	IF, IHC, WB
Recommended Dilution:	ICC/IF:1:100-1:1000; IHC:1:100-1:1000; WB:1:500-1:3000
Reactivity:	Human (Predicted: Rat, Bovine, Rhesus Monkey)
Host:	Rabbit
Isotype:	IgG
Clonality:	Polyclonal
Immunogen:	Recombinant fragment corresponding to a region within amino acids 1 and 172 of RNA polymerase IIB (Uniprot ID#P30876)
Formulation:	0.1M Tris, 0.1M Glycine, 20% Glycerol (pH7). 0.01% Thimerosal was added as a preservative.
Concentration:	lot specific
Purification:	Purified by antigen-affinity chromatography.
Conjugation:	Unconjugated
Storage:	Store at -20°C as received.
Stability:	Stable for 12 months from date of receipt.
Predicted Protein Size:	134 kDa
Gene Name:	polymerase (RNA) II subunit B
Database Link:	NP_000929 Entrez Gene 289561 Rat Entrez Gene 5431 Human P30876
Background:	This gene encodes the second largest subunit of RNA polymerase II, the polymerase responsible for synthesizing messenger RNA in eukaryotes. This subunit, in combination with at least two other polymerase subunits, forms a structure within the polymerase that maintains contact in the active site of the enzyme between the DNA template and the newly synthesized RNA. [provided by RefSeq]
Synonyms:	hRPB140; POL2RB; RPB2

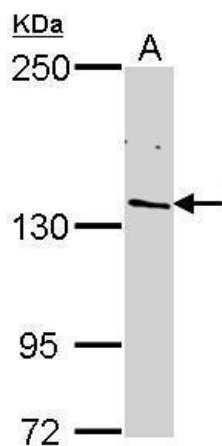


[View online »](#)

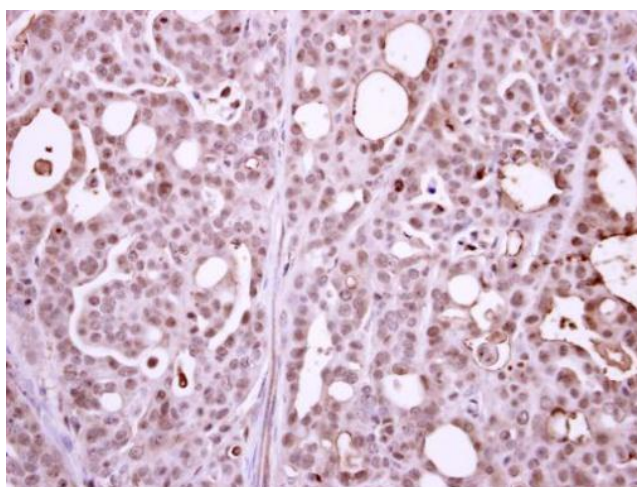
Note:	Seq homology of immunogen across species: Rat (100%), Rhesus Monkey (100%), Bovine (100%)
Protein Families:	Transcription Factors
Protein Pathways:	Huntington's disease, Metabolic pathways, Purine metabolism, Pyrimidine metabolism, RNA polymerase

Product images:

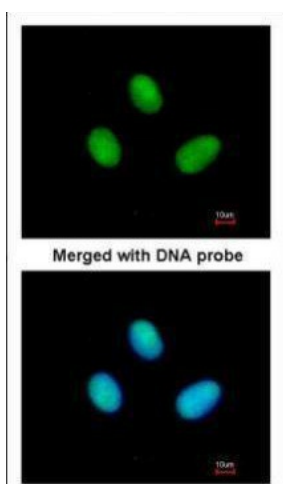
Sample (30 ug of whole cell lysate). A: BCL-1. 5% SDS PAGE. TA308532 diluted at 1:1000.



Sample (30 ug of whole cell lysate). A: H1299. 5% SDS PAGE. TA308532 diluted at 1:1000.



Immunohistochemical analysis of paraffin-embedded NCIN87 xenograft, using POLR2B (TA308532) antibody at 1:500 dilution.



Immunofluorescence analysis of paraformaldehyde-fixed HeLa, using POLR2B (TA308532) antibody at 1:200 dilution.