

## Product datasheet for **TA308529**

### Cytochrome P450 4A (CYP4A11) Rabbit Polyclonal Antibody

#### Product data:

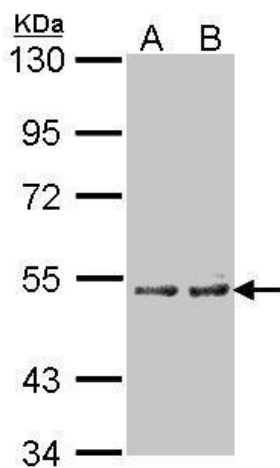
Product Type:	Primary Antibodies
Applications:	IF, IHC, WB
Recommended Dilution:	ICC/IF:1:100-1:1000; IHC:1:100-1:1000; WB:1:500-1:3000
Reactivity:	Human
Host:	Rabbit
Isotype:	IgG
Clonality:	Polyclonal
Immunogen:	Recombinant fragment corresponding to a region within amino acids 48 and 316 of CYP4A11 (Uniprot ID#Q02928)
Formulation:	0.1M Tris, 0.1M Glycine, 10% Glycerol (pH7). 0.01% Thimerosal was added as a preservative.
Concentration:	lot specific
Purification:	Purified by antigen-affinity chromatography.
Conjugation:	Unconjugated
Storage:	Store at -20°C as received.
Stability:	Stable for 12 months from date of receipt.
Predicted Protein Size:	59 kDa
Gene Name:	cytochrome P450 family 4 subfamily A member 11
Database Link:	<a href="#">NP_000769</a> <a href="#">Entrez Gene 1579 Human Q02928</a>
Background:	This gene encodes a member of the cytochrome P450 superfamily of enzymes. The cytochrome P450 proteins are monooxygenases which catalyze many reactions involved in drug metabolism and synthesis of cholesterol, steroids and other lipids. This protein localizes to the endoplasmic reticulum and hydroxylates medium-chain fatty acids such as laurate and myristate. [provided by RefSeq]
Synonyms:	CP4Y; CYP4A2; CYP4A11
Protein Families:	Druggable Genome, P450, Transmembrane



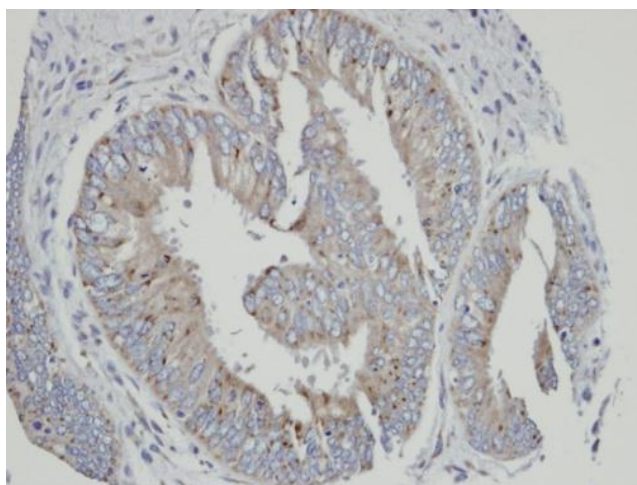
[View online »](#)

**Protein Pathways:** Arachidonic acid metabolism, Fatty acid metabolism, Metabolic pathways, PPAR signaling pathway, Retinol metabolism, Vascular smooth muscle contraction

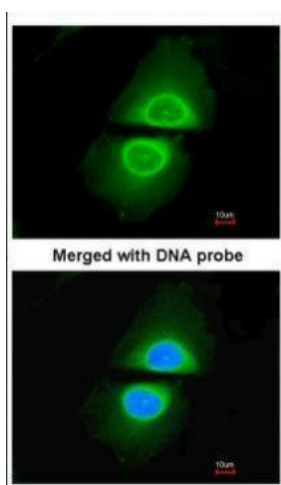
**Product images:**



Sample (30 ug of whole cell lysate). A:A431.  
B:H1299. 7.5% SDS PAGE. TA308529 diluted at 1:100



Immunohistochemical analysis of paraffin-embedded mixed OVCA, using CYP4A11 (TA308529) antibody at 1:100 dilution.



Immunofluorescence analysis of paraformaldehyde-fixed HeLa, using Cytochrome P450 4A11 (TA308529) antibody at 1:200 dilution.