

Product datasheet for **TA308528**

RFC4 Rabbit Polyclonal Antibody

Product data:

Product Type:	Primary Antibodies
Applications:	IF, IHC, WB
Recommended Dilution:	ICC/IF:1:100-1:1000; IHC:1:100-1:1000; WB:1:500-1:3000
Reactivity:	Human, Mouse (Predicted: Rat, Xenopus, X. tropicalis)
Host:	Rabbit
Isotype:	IgG
Clonality:	Polyclonal
Immunogen:	Recombinant fragment corresponding to a region within amino acids 18 and 323 of RFC4 (Uniprot ID#P35249)
Formulation:	0.1M Tris, 0.1M Glycine, 10% Glycerol (pH7). 0.01% Thimerosal was added as a preservative.
Concentration:	lot specific
Purification:	Purified by antigen-affinity chromatography.
Conjugation:	Unconjugated
Storage:	Store at -20°C as received.
Stability:	Stable for 12 months from date of receipt.
Predicted Protein Size:	40 kDa
Gene Name:	replication factor C subunit 4
Database Link:	NP_002907 Entrez Gene 106344 MouseEntrez Gene 288003 RatEntrez Gene 5984 Human P35249

Background: The elongation of primed DNA templates by DNA polymerase delta and DNA polymerase epsilon requires the accessory proteins proliferating cell nuclear antigen (PCNA) and replication factor C (RFC). RFC, also named activator 1, is a protein complex consisting of five distinct subunits of 140, 40, 38, 37, and 36 kD. This gene encodes the 37 kD subunit. This subunit forms a core complex with the 36 and 40 kDa subunits. The core complex possesses DNA-dependent ATPase activity, which was found to be stimulated by PCNA in an in vitro system. Alternatively spliced transcript variants encoding the same protein have been reported. [provided by RefSeq]



[View online »](#)

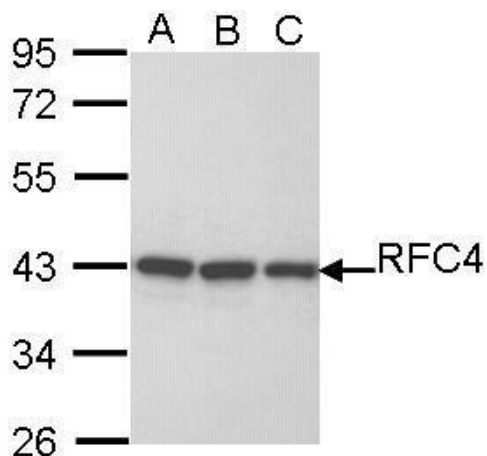
Synonyms: A1; RFC37

Note: Seq homology of immunogen across species: Rat (92%), Xenopus laevis (84%), Xenopus tropicalis (87%)

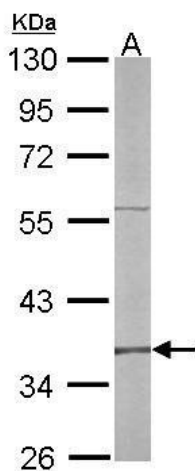
Protein Families: Druggable Genome, Stem cell - Pluripotency

Protein Pathways: DNA replication, Mismatch repair, Nucleotide excision repair

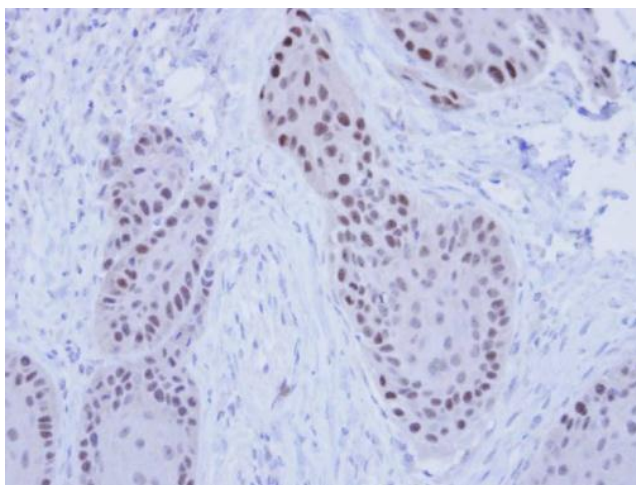
Product images:



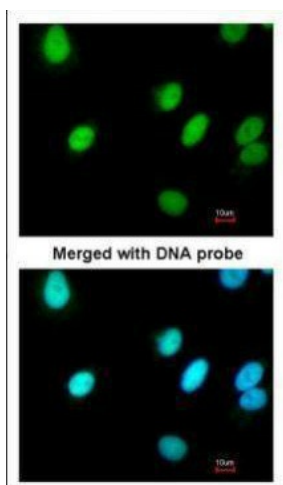
Sample (30 ug of whole cell lysate). A: H1299. B: HeLa. C: Hep G2. 10% SDS PAGE. TA308528 diluted at 1:1000.



Sample (50 ug of whole cell lysate). A: mouse liver. 10% SDS PAGE. TA308528 diluted at 1:500.



Immunohistochemical analysis of paraffin-embedded MDAMB-468 Xenograft, using RFC4 (TA308528) antibody at 1:100 dilution.



Immunofluorescence analysis of paraformaldehyde-fixed A549, using RFC4 (TA308528) antibody at 1:200 dilution.