

## Product datasheet for **TA308526**

### MCM7 Rabbit Polyclonal Antibody

#### Product data:

Product Type:	Primary Antibodies
Applications:	IF, IHC, IP, WB
Recommended Dilution:	ICC/IF:1:100-1:1000; IHC:1:100-1:1000; WB:1:500-1:3000
Reactivity:	Human (Predicted: Mouse, Rat, Zebrafish, Bovine)
Host:	Rabbit
Isotype:	IgG
Clonality:	Polyclonal
Immunogen:	Recombinant fragment corresponding to a region within amino acids 190 and 481 of MCM7 (Uniprot ID#P33993)
Formulation:	0.1M Tris, 0.1M Glycine, 10% Glycerol (pH7). 0.01% Thimerosal was added as a preservative.
Purification:	Purified by antigen-affinity chromatography.
Conjugation:	Unconjugated
Storage:	Store at -20°C as received.
Stability:	Stable for 12 months from date of receipt.
Predicted Protein Size:	61 kDa
Gene Name:	minichromosome maintenance complex component 7
Database Link:	<a href="#">NP_877577</a> <a href="#">Entrez Gene 17220 Mouse</a> <a href="#">Entrez Gene 288532 Rat</a> <a href="#">Entrez Gene 4176 Human</a> <a href="#">P33993</a>



[View online »](#)

**Background:**

The protein encoded by this gene is one of the highly conserved mini-chromosome maintenance proteins (MCM) that are essential for the initiation of eukaryotic genome replication. The hexameric protein complex formed by the MCM proteins is a key component of the pre-replication complex (pre\_RC) and may be involved in the formation of replication forks and in the recruitment of other DNA replication related proteins. The MCM complex consisting of this protein and MCM2, 4 and 6 proteins possesses DNA helicase activity, and may act as a DNA unwinding enzyme. Cyclin D1-dependent kinase, CDK4, is found to associate with this protein, and may regulate the binding of this protein with the tumorsuppressor protein RB1/RB. Alternatively spliced transcript variants encoding distinct isoforms have been reported. [provided by RefSeq]

**Synonyms:**

CDC47; MCM2; P1.1-MCM3; P1CDC47; P85MCM; PNAS146; PPP1R104

**Note:**

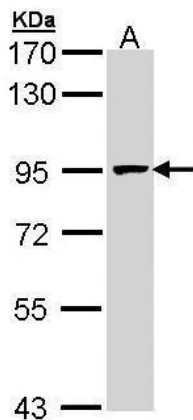
Seq homology of immunogen across species: Mouse (92%), Rat (93%), Zebrafish (85%), Bovine (98%)

**Protein Families:**

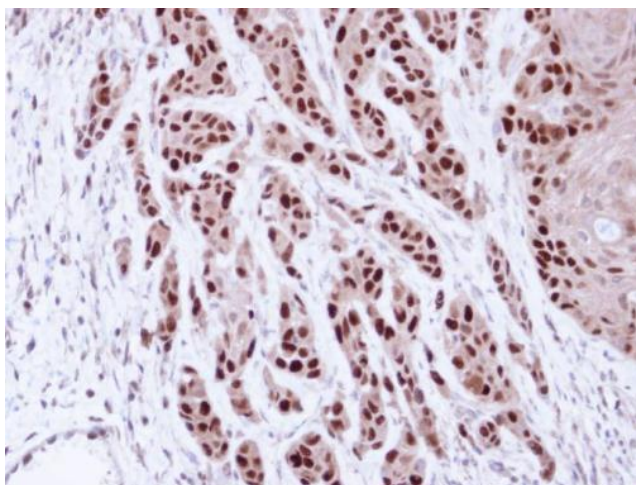
Transcription Factors

**Protein Pathways:**

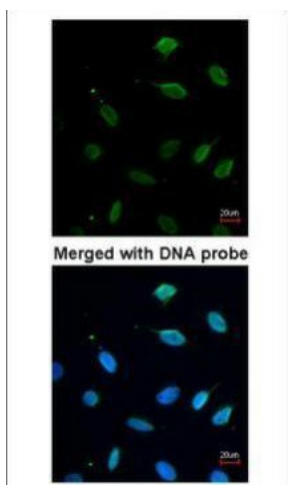
Cell cycle, DNA replication

**Product images:**

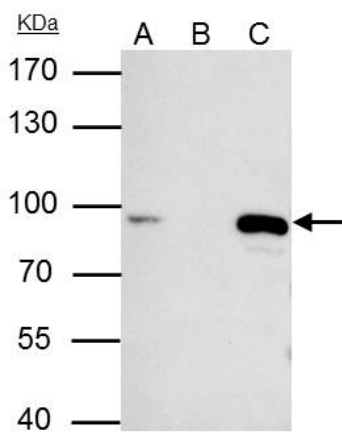
Sample (30 ug of whole cell lysate). A: H1299.  
7.5% SDS PAGE. TA308526 diluted at 1:1000.



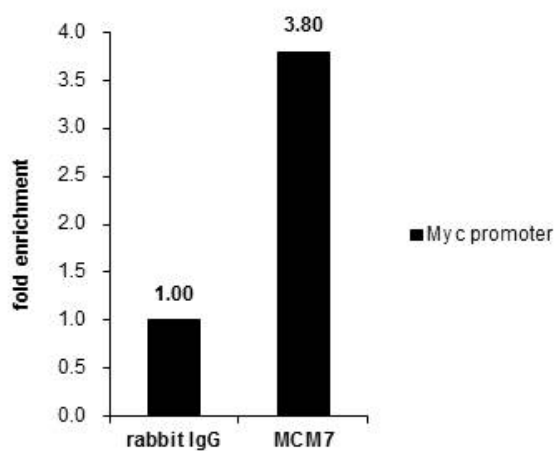
Immunohistochemical analysis of paraffin-embedded Cal27 Xenograft, using MCM7 (TA308526) antibody at 1:100 dilution.



Immunofluorescence analysis of paraformaldehyde-fixed HeLa, using MCM7 (TA308526) antibody at 1:200 dilution.



MCM7 antibody [N2C2], Internal immunoprecipitates MCM7 protein in IP experiments. IP samples: HeLa whole cell extract. A. 40 ug HeLa whole cell extract. B. Control with 4 ug of preimmune Rabbit IgG. C. Immunoprecipitation of MCM7 protein by 4 ug MCM7 anti



Cross-linked ChIP was performed with HeLa chromatin extract and 5 ug of either control rabbit IgG or anti-MCM7 antibody. The precipitated DNA was detected by PCR with primer set targeting to Myc promoter.