

Product datasheet for **TA308525**

UBE2B Rabbit Polyclonal Antibody

Product data:

Product Type:	Primary Antibodies
Applications:	IF, WB
Recommended Dilution:	ICC/IF:1:100-1:1000; WB:1:500-1:10000
Reactivity:	Human, Mouse (Predicted: Rat, Pig, Rabbit, Bovine, Rhesus Monkey)
Host:	Rabbit
Isotype:	IgG
Clonality:	Polyclonal
Immunogen:	Recombinant fragment contain a sequence corresponding to a region within amino acids 1 and 152 of UBE2B
Formulation:	1XPBS, 1% BSA, 20% Glycerol (pH7). 0.01% Thimerosal was added as a preservative.
Concentration:	lot specific
Purification:	Purified by antigen-affinity chromatography.
Conjugation:	Unconjugated
Storage:	Store at -20°C as received.
Stability:	Stable for 12 months from date of receipt.
Predicted Protein Size:	17 kDa
Gene Name:	ubiquitin conjugating enzyme E2 B
Database Link:	NP_003328 Entrez Gene 22210 Mouse Entrez Gene 81816 Rat Entrez Gene 7320 Human P63146
Background:	The modification of proteins with ubiquitin is an important cellular mechanism for targeting abnormal or short-lived proteins for degradation. Ubiquitination involves at least three classes of enzymes: ubiquitin-activating enzymes, or E1s, ubiquitin-conjugating enzymes, or E2s, and ubiquitin-protein ligases, or E3s. This gene encodes a member of the E2 ubiquitin-conjugating enzyme family. This enzyme is required for post-replicative DNA damage repair. Its protein sequence is 100% identical to the mouse, rat, and rabbit homologs, which indicates that this enzyme is highly conserved in eukaryotic evolution. [provided by RefSeq]
Synonyms:	E2-17kDa; HHR6B; HR6B; RAD6B; UBC2



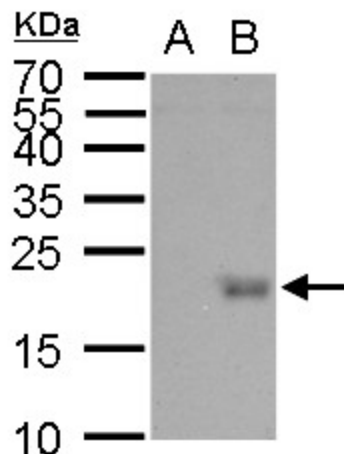
[View online »](#)

Note: Seq homology of immunogen across species: Rat (100%), Pig (100%), Rabbit (100%), Rhesus Monkey (100%), Bovine (100%)

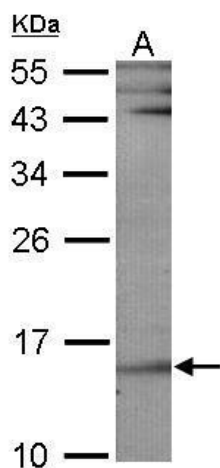
Protein Families: Druggable Genome

Protein Pathways: Ubiquitin mediated proteolysis

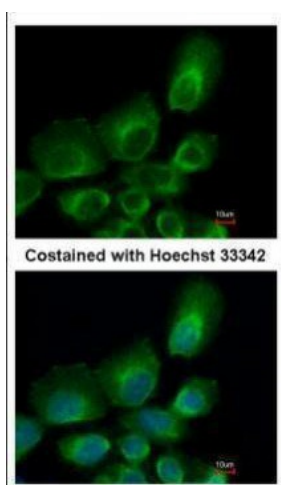
Product images:



UBE2B antibody detects UBE2B protein by western blot analysis. A. 30 ug 293T whole cell lysate/extract. B. 30 ug whole cell lysate/extract of 3xFlag-human UBE2B-transfected 293T cells. 12 % SDS-PAGE. UBE2B antibody (TA308525) dilution: 1:5000



Sample (30 ug of whole cell lysate). A: NIH-3T3 12% SDS PAGE. TA308525 diluted at 1:1000.



Immunofluorescence analysis of paraformaldehyde-fixed A431, using UBE2B (TA308525) antibody at 1:500 dilution.