

Product datasheet for **TA308524**

CDK3 Rabbit Polyclonal Antibody

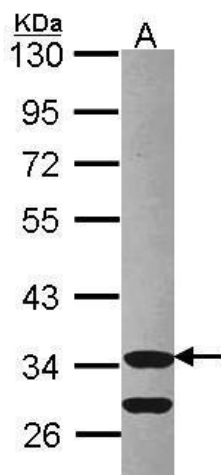
Product data:

Product Type:	Primary Antibodies
Applications:	WB
Recommended Dilution:	WB:1:500-1:3000
Reactivity:	Human (Predicted: Chicken, Bovine)
Host:	Rabbit
Isotype:	IgG
Clonality:	Polyclonal
Immunogen:	Recombinant fragment corresponding to a region within amino acids 1 and 238 of Cdk3 (Uniprot ID#Q00526)
Formulation:	0.1M Tris, 0.1M Glycine, 10% Glycerol (pH7). 0.01% Thimerosal was added as a preservative.
Concentration:	lot specific
Purification:	Purified by antigen-affinity chromatography.
Conjugation:	Unconjugated
Storage:	Store at -20°C as received.
Stability:	Stable for 12 months from date of receipt.
Predicted Protein Size:	35 kDa
Gene Name:	cyclin-dependent kinase 3
Database Link:	NP_001249 Entrez Gene 1018 Human Q00526
Background:	This gene encodes a member of the cyclin-dependent protein kinase family. The protein promotes entry into S phase, in part by activating members of the E2F family of transcription factors. The protein also associates with cyclin C and phosphorylates the retinoblastoma 1 protein to promote exit from G0. [provided by RefSeq]
Synonyms:	cyclin-dependent kinase 3
Note:	Seq homology of immunogen across species: Chicken (88%), Bovine (92%)
Protein Families:	Druggable Genome, Protein Kinase



[View online »](#)

Product images:



Sample (30 ug of whole cell lysate). A: Hep G2.
10% SDS PAGE. Cdk3 antibody. TA308524 diluted
at 1:1000.