

Product datasheet for **TA308521**

ERCC8 Rabbit Polyclonal Antibody

Product data:

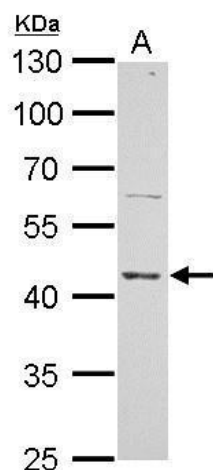
Product Type:	Primary Antibodies
Applications:	IF, WB
Recommended Dilution:	ICC/IF:1:100-1:1000; WB:1:500-1:3000
Reactivity:	Human, Mouse
Host:	Rabbit
Isotype:	IgG
Clonality:	Polyclonal
Immunogen:	Recombinant fragment corresponding to a region within amino acids 1 and 194 of CSA (Uniprot ID#Q13216)
Formulation:	0.1M Tris, 0.1M Glycine, 10% Glycerol (pH7). 0.01% Thimerosal was added as a preservative.
Concentration:	lot specific
Purification:	Affinity purified by Protein A.
Conjugation:	Unconjugated
Storage:	Store at -20°C as received.
Stability:	Stable for 12 months from date of receipt.
Predicted Protein Size:	44 kDa
Gene Name:	ERCC excision repair 8, CSA ubiquitin ligase complex subunit
Database Link:	NP_001007234 Entrez Gene 71991 Mouse Entrez Gene 1161 Human Q13216
Background:	This gene encodes a WD repeat protein, which interacts with Cockayne syndrome type B (CSB) protein and with p44 protein, a subunit of the RNA polymerase II transcription factor IIH. Mutations in this gene have been identified in patients with hereditary disease Cockayne syndrome (CS). CS cells are abnormally sensitive to ultraviolet radiation and are defective in the repair of transcriptionally active genes. [provided by RefSeq]
Synonyms:	CKN1; CSA; UVSS2
Protein Families:	Druggable Genome, Transcription Factors



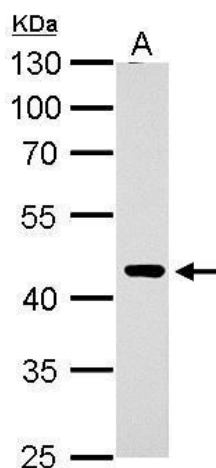
[View online »](#)

Protein Pathways: Nucleotide excision repair, Ubiquitin mediated proteolysis

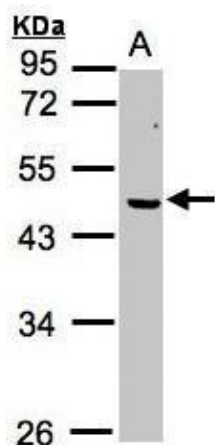
Product images:



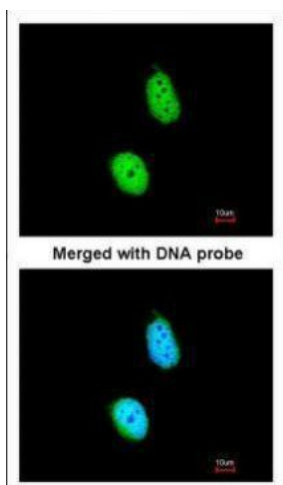
ERCC8 antibody detects ERCC8 protein by Western blot analysis. A. 30 ug C8D30 whole cell lysate/extract. 10 % SDS-PAGE. ERCC8 antibody (TA308521) dilution: 1:1000



ERCC8 antibody detects ERCC8 protein by Western blot analysis. A. 30 ug Rat2 whole cell lysate/extract. 10 % SDS-PAGE. ERCC8 antibody (TA308521) dilution: 1:1000



Sample (30ug whole cell lysate). A: MOLT4. 10% SDS PAGE. TA308521 diluted at 1:1000



Immunofluorescence analysis of paraformaldehyde-fixed HeLa, using ERCC8 (TA308521) antibody at 1:200 dilution.