

Product datasheet for **TA308518**

DCAMKL2 (DCLK2) Rabbit Polyclonal Antibody

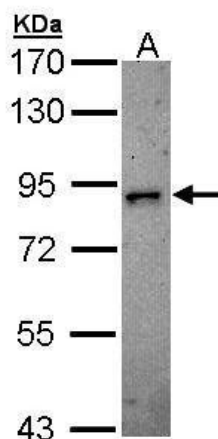
Product data:

Product Type:	Primary Antibodies
Applications:	IF, WB
Recommended Dilution:	ICC/IF:1:100-1:1000; WB:1:500-1:3000
Reactivity:	Human (Predicted: Mouse)
Host:	Rabbit
Isotype:	IgG
Clonality:	Polyclonal
Immunogen:	Recombinant fragment corresponding to a region within amino acids 187 and 522 of DCAMKL2 (Uniprot ID#Q8N568)
Formulation:	0.1M Tris, 0.1M Glycine, 10% Glycerol (pH7). 0.01% Thimerosal was added as a preservative.
Concentration:	lot specific
Purification:	Purified by antigen-affinity chromatography.
Conjugation:	Unconjugated
Storage:	Store at -20°C as received.
Stability:	Stable for 12 months from date of receipt.
Predicted Protein Size:	84 kDa
Gene Name:	doublecortin like kinase 2
Database Link:	NP_001035351 Entrez Gene 70762 Mouse Entrez Gene 166614 Human Q8N568
Synonyms:	CL2; CLICK-II; CLICK2; CLIK2; DCAMKL2; DCDC3; DCDC3B; DCK2
Note:	Seq homology of immunogen across species: Mouse (94%)
Protein Families:	Druggable Genome, Protein Kinase

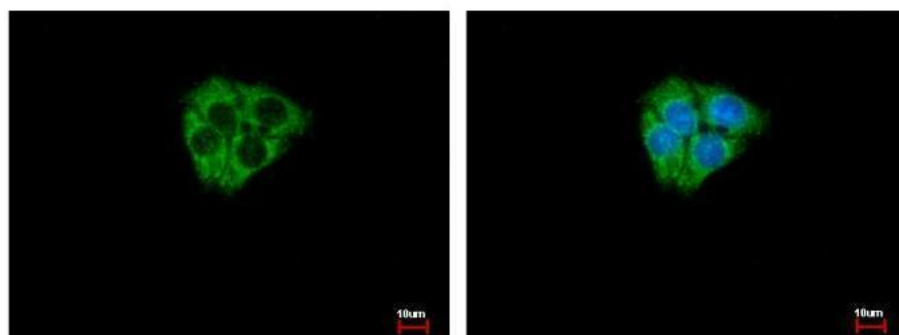


[View online »](#)

Product images:



Sample (30 ug of whole cell lysate). A: H1299.
7.5% SDS PAGE. TA308518 diluted at 1:500



DCAMKL2 antibody [N2C2], Internal detects DCAMKL2 protein at Cytoplasm by immunofluorescent analysis. Sample: HepG2 cells were fixed in -20°C 100% MeOH for 5 min. Green: DCAMKL2 protein stained by DCAMKL2 antibody [N2C2], Internal (TA308518) diluted at 1: