

Product datasheet for **TA308516**

Epoxide hydrolase (EPHX1) Rabbit Polyclonal Antibody

Product data:

Product Type:	Primary Antibodies
Applications:	IF, IHC, WB
Recommended Dilution:	ICC/IF:1:100-1:1000; IHC:1:100-1:1000; WB:1:500-1:3000
Reactivity:	Human (Predicted: Bovine, Pig, Rat)
Host:	Rabbit
Isotype:	IgG
Clonality:	Polyclonal
Immunogen:	Recombinant fragment corresponding to a region within amino acids 1 and 223 of EPHX1 (Uniprot ID#P07099)
Formulation:	0.1M Tris, 0.1M Glycine, 10% Glycerol (pH7). 0.01% Thimerosal was added as a preservative.
Concentration:	lot specific
Purification:	Purified by antigen-affinity chromatography.
Conjugation:	Unconjugated
Storage:	Store at -20°C as received.
Stability:	Stable for 12 months from date of receipt.
Predicted Protein Size:	53 kDa
Gene Name:	epoxide hydrolase 1
Database Link:	NP_001129490 Entrez Gene 25315 Rat Entrez Gene 2052 Human P07099
Background:	Epoxide hydrolase is a critical biotransformation enzyme that converts epoxides from the degradation of aromatic compounds to trans-dihydrodiols which can be conjugated and excreted from the body. Epoxide hydrolase functions in both the activation and detoxification of epoxides. Mutations in this gene cause preeclampsia, epoxide hydrolase deficiency or increased epoxide hydrolase activity. Alternatively spliced transcript variants encoding the same protein have been found for this gene.
Synonyms:	EPHX; EPOX; HYL1; MEH

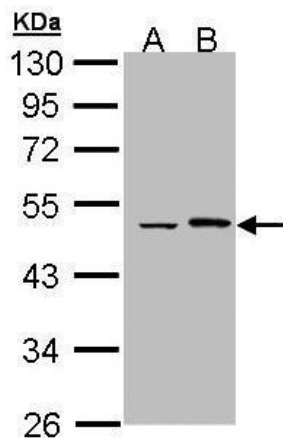

[View online »](#)

Note: Seq homology of immunogen across species: Pig (88%), Rat (86%), Bovine (88%)

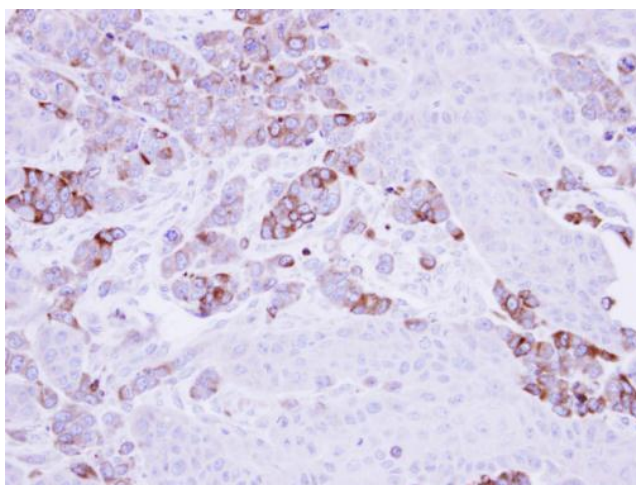
Protein Families: Druggable Genome, Protease

Protein Pathways: Metabolism of xenobiotics by cytochrome P450

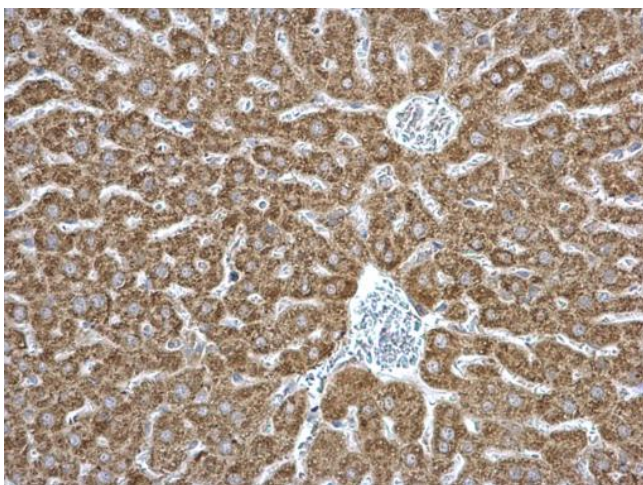
Product images:



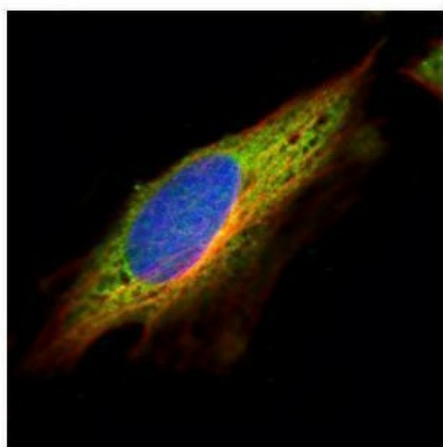
Sample (30 ug of whole cell lysate). A: Hela. B: Hep G2. 10% SDS PAGE. TA308516 diluted at 1:1000.



Immunohistochemical analysis of paraffin-embedded SG xenograft, using Epoxide hydrolase 1 (TA308516) antibody at 1:500 dilution.



EPHX1 antibody detects EPHX1 protein at cytosol on mouse liver by immunohistochemical analysis. Sample: Paraffin-embedded mouse liver. EPHX1 antibody (TA308516) dilution: 1:500.



Confocal immunofluorescence analysis (Olympus FV10i) of methanol-fixed HeLa, using EPHX1 (TA308516) antibody (Green) at 1:500 dilution. Alpha-tubulin filaments were labeled with anti-alpha tubulin antibody (Red) at 1:2000.