

## Product datasheet for **TA308514**

### TTC11 (FIS1) Rabbit Polyclonal Antibody

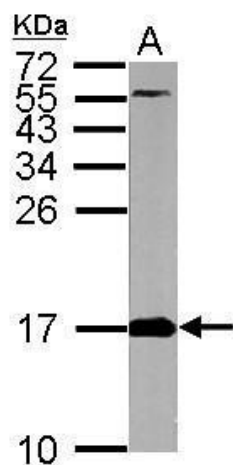
#### Product data:

Product Type:	Primary Antibodies
Applications:	IF, IHC, WB
Recommended Dilution:	IHC:1:100-1:1000; WB:
Reactivity:	Human (Predicted: Rhesus Monkey)
Host:	Rabbit
Isotype:	IgG
Clonality:	Polyclonal
Immunogen:	Recombinant fragment corresponding to a region within amino acids 1 and 152 of FIS1 (Uniprot ID#Q9Y3D6)
Formulation:	1XPBS, 20% Glycerol (pH7). 0.025% ProClin 300 was added as a preservative.
Concentration:	lot specific
Purification:	Purified by antigen-affinity chromatography.
Conjugation:	Unconjugated
Storage:	Store at -20°C as received.
Stability:	Stable for 12 months from date of receipt.
Predicted Protein Size:	17 kDa
Gene Name:	fission, mitochondrial 1
Database Link:	<a href="#">NP_057152</a> <a href="#">Entrez Gene 51024 Human Q9Y3D6</a>
Background:	The balance between fission and fusion regulates the morphology of mitochondria. TTC11 is a component of a mitochondrial complex that promotes mitochondrial fission (James et al., 2003 [PubMed 12783892]). [supplied by OMIM]
Synonyms:	CGI-135; TTC11
Note:	Seq homology of immunogen across species: Rhesus Monkey (100%)
Protein Families:	Transmembrane

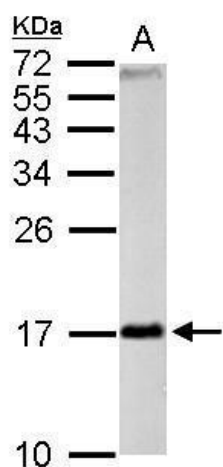


[View online »](#)

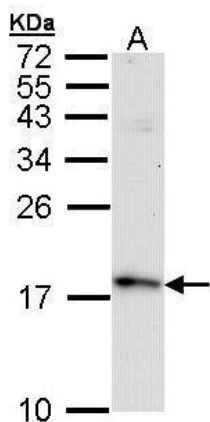
## Product images:



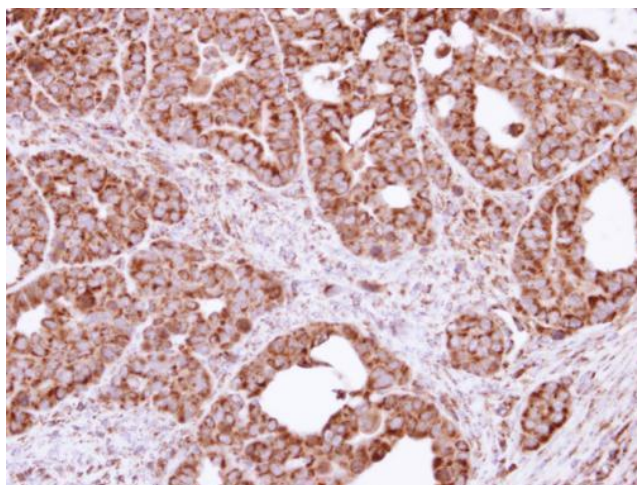
Sample (50 ug of whole cell lysate). A: mouse brain. 15% SDS PAGE. TA308514 diluted at 1:5000.



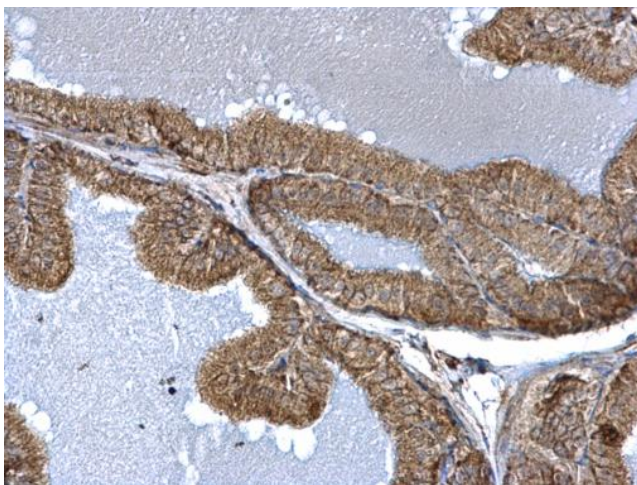
FIS1 antibody detects FIS1 protein by Western blot analysis. A. 50 ug rat brain lysate/extract. 15 % SDS-PAGE. FIS1 antibody (TA308514) dilution: 1:1000



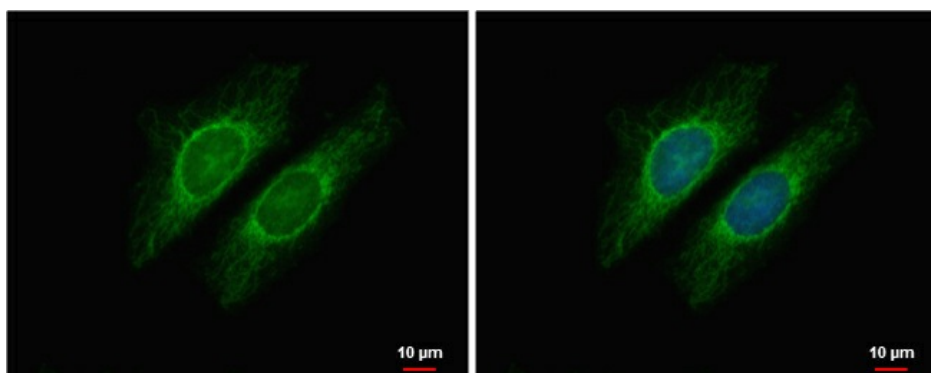
Sample (30 ug of whole cell lysate). A: Raji. 15% SDS PAGE. TA308514 diluted at 1:10000.



Immunohistochemical analysis of paraffin-embedded NCIN87 xenograft, using FIS1 (TA308514) antibody at 1:100 dilution.



TTC11 antibody detects TTC11 protein at mitochondria on mouse prostate by immunohistochemical analysis. Sample: Paraffin-embedded mouse prostate. TTC11 antibody (TA308514) dilution: 1:500.



FIS1 antibody detects FIS1 protein at mitochondria by immunofluorescent analysis. Sample: HeLa cells were fixed in 2% paraformaldehyde/culture medium at 37°C for 30min. Green: FIS1 protein stained by FIS1 antibody (TA308514) diluted at 1:1000. Blue: Hoec