

## Product datasheet for **TA308513**

### AHI1 Rabbit Polyclonal Antibody

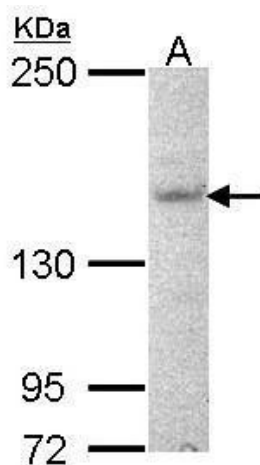
#### Product data:

Product Type:	Primary Antibodies
Applications:	WB
Recommended Dilution:	WB:1:500-1:3000
Reactivity:	Human
Host:	Rabbit
Isotype:	IgG
Clonality:	Polyclonal
Immunogen:	Synthetic peptide corresponding to a region within amino acids 1 and 42 of AHI1 (Uniprot ID#Q8N157)
Formulation:	0.1M Tris, 0.1M Glycine, 10% Glycerol (pH7). 0.01% Thimerosal was added as a preservative.
Concentration:	lot specific
Purification:	Purified by antigen-affinity chromatography.
Conjugation:	Unconjugated
Storage:	Store at -20°C as received.
Stability:	Stable for 12 months from date of receipt.
Predicted Protein Size:	137 kDa
Gene Name:	Abelson helper integration site 1
Database Link:	<a href="#">NP_001128304</a> <a href="#">Entrez Gene 54806 Human</a> <a href="#">Q8N157</a>
Background:	This gene is apparently required for both cerebellar and cortical development in humans. This gene mutations cause specific forms of Joubert syndrome-related disorders. Joubert syndrome (JS) is a recessively inherited developmental brain disorder with several identified causative chromosomal loci. Alternatively spliced transcript variants encoding different isoforms have been identified. [provided by RefSeq]
Synonyms:	AHI-1; dJ71N10.1; JBTS3; ORF1



[View online »](#)

## Product images:



Sample (30 ug of whole cell lysate). A: NT2D1. 5% SDS PAGE. TA308513 diluted at 1:1000.