

## Product datasheet for **TA308507**

### WNT11 Rabbit Polyclonal Antibody

#### Product data:

Product Type:	Primary Antibodies
Applications:	IF, IHC, WB
Recommended Dilution:	ICC/IF:1:100-1:1000; IHC:1:100-1:1000; WB:1:500-1:3000
Reactivity:	Human, Mouse (Predicted: Chicken, Rat, Xenopus, Bovine)
Host:	Rabbit
Isotype:	IgG
Clonality:	Polyclonal
Immunogen:	Recombinant fragment corresponding to a region within amino acids 1 and 310 of WNT11 (Uniprot ID#O96014)
Formulation:	1XPBS, 20% Glycerol (pH7). 0.025% ProClin 300 was added as a preservative.
Purification:	Purified by antigen-affinity chromatography.
Conjugation:	Unconjugated
Storage:	Store at -20°C as received.
Stability:	Stable for 12 months from date of receipt.
Predicted Protein Size:	39 kDa
Gene Name:	Wnt family member 11
Database Link:	<a href="#">NP_004617</a> <a href="#">Entrez Gene 22411 Mouse</a> <a href="#">Entrez Gene 140584 Rat</a> <a href="#">Entrez Gene 7481 Human</a> <a href="#">O96014</a>
Background:	The WNT gene family consists of structurally related genes which encode secreted signaling proteins. These proteins have been implicated in oncogenesis and in several developmental processes, including regulation of cell fate and patterning during embryogenesis. This gene is a member of the WNT gene family. It encodes a protein which shows 97%, 85%, and 63% amino acid identity with mouse, chicken, and Xenopus Wnt11 protein, respectively. This gene may play roles in the development of skeleton, kidney and lung, and is considered to be a plausible candidate gene for High Bone Mass Syndrome. [provided by RefSeq]
Synonyms:	HWNT11



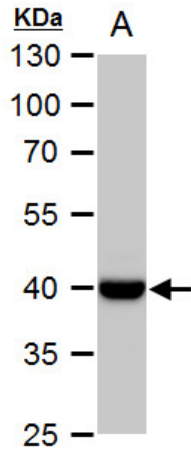
[View online »](#)

**Note:** Seq homology of immunogen across species: Chicken (85%), Rat (96%), Xenopus laevis (81%), Bovine (98%)

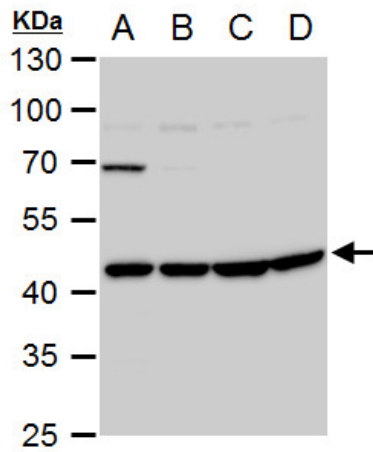
**Protein Families:** Secreted Protein, Transmembrane

**Protein Pathways:** Basal cell carcinoma, Hedgehog signaling pathway, Melanogenesis, Pathways in cancer, Wnt signaling pathway

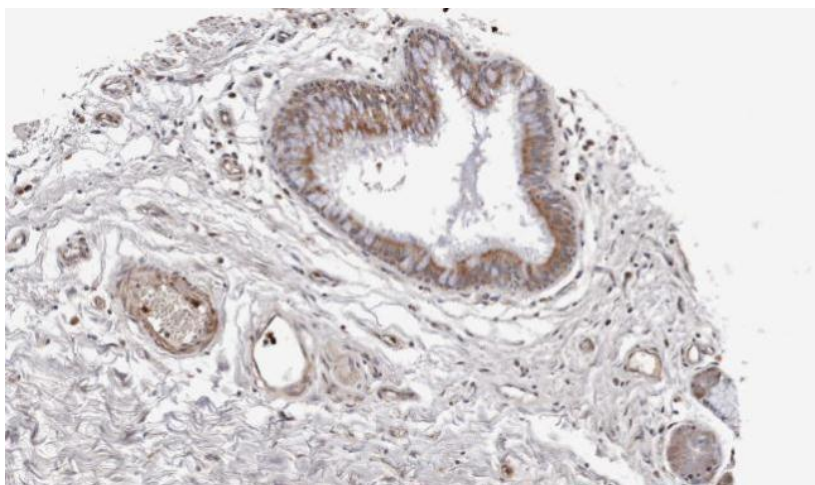
**Product images:**



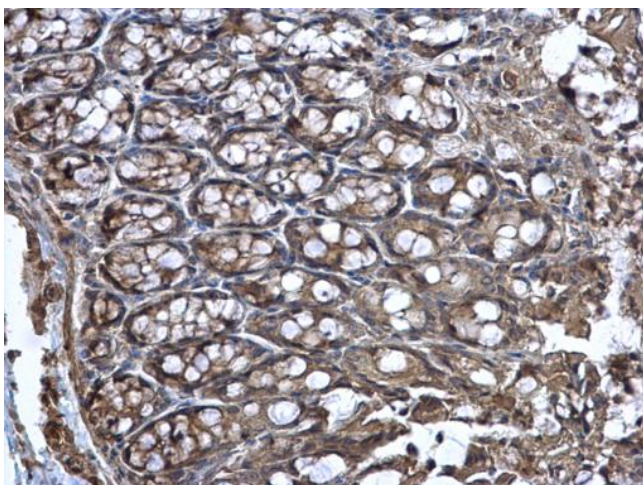
WNT11 antibody detects WNT11 protein by western blot analysis. A. 50 ug mouse heart extract. 10 % SDS-PAGE. WNT11 antibody (TA308507) dilution: 1:1000



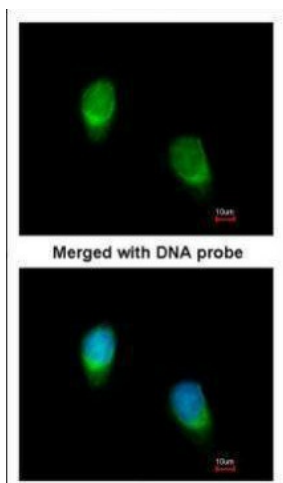
WNT11 antibody detects WNT11 protein by western blot analysis. A. 30 ug 293T whole cell extract. B. 30 ug A431 whole cell extract. C. 30 ug HeLa whole cell extract. D. 30 ug HepG2 whole cell extract. 12 % SDS-PAGE. WNT11 antibody (TA308507) dilution: 1:10



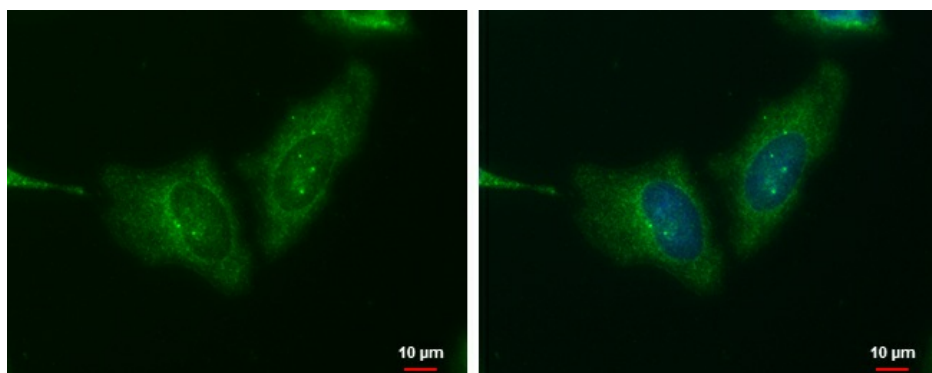
Immunohistochemical analysis of paraffin-embedded lung SCC xenograft, using WNT11 (TA308507) antibody at 1:100 dilution.



WNT11 antibody detects WNT11 protein at secreted on mouse colon by immunohistochemical analysis. Sample: Paraffin-embedded mouse colon. WNT11 antibody (TA308507) dilution: 1:500.



Immunofluorescence analysis of paraformaldehyde-fixed HeLa, using WNT11 (TA308507) antibody at 1:200 dilution.



WNT11 antibody detects WNT11 protein at cytoplasm by immunofluorescent analysis. Sample: HeLa cells were fixed in ice-cold MeOH for 5 min. Green: WNT11 protein stained by WNT11 antibody (TA308507) diluted at 1:500. Blue: Hoechst 33342 staining. Scale bar