

Product datasheet for **TA308506**

Repulsive Guidance Molecule B (RGMB) Rabbit Polyclonal Antibody

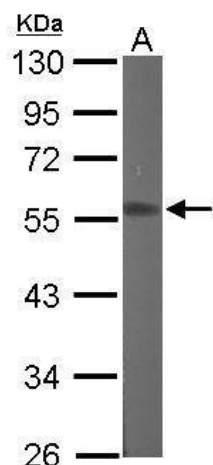
Product data:

Product Type:	Primary Antibodies
Applications:	IHC, WB
Recommended Dilution:	IHC:1:100-1:1000; WB:1:500-1:3000
Reactivity:	Human, Mouse
Host:	Rabbit
Isotype:	IgG
Clonality:	Polyclonal
Immunogen:	Recombinant fragment corresponding to a region within amino acids 178 and 437 of RGMB (Uniprot ID#Q6NW40)
Formulation:	0.1M Tris, 0.1M Glycine, 10% Glycerol (pH7). 0.01% Thimerosal was added as a preservative.
Purification:	Purified by antigen-affinity chromatography.
Conjugation:	Unconjugated
Storage:	Store at -20°C as received.
Stability:	Stable for 12 months from date of receipt.
Predicted Protein Size:	52 kDa
Gene Name:	repulsive guidance molecule family member b
Database Link:	NP_775941 Entrez Gene 68799 Mouse Entrez Gene 285704 Human Q6NW40
Background:	RGMB is a glycosylphosphatidylinositol (GPI)-anchored member of the repulsive guidance molecule family (see RGMA, MIM 607362) and contributes to the patterning of the developing nervous system (Samad et al., 2005 [PubMed 15671031]). [supplied by OMIM]
Synonyms:	DKFZp434P228; DRAGON; FLJ90406; member B; MGC86970; repulsive guidance molecule B; RGM domain family

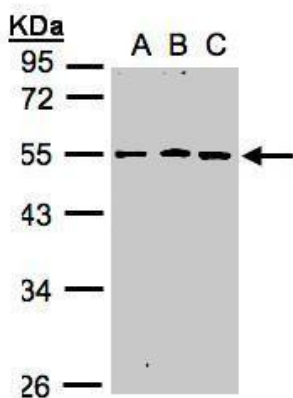


[View online »](#)

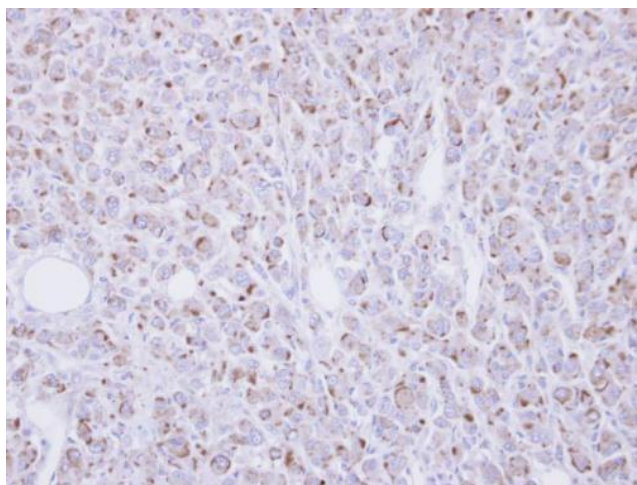
Product images:



Sample (50 ug of whole cell lysate). A: Mouse brain. 10% SDS PAGE. TA308506 diluted at 1:1000.



Sample (30 ug whole cell lysate). A:A431. B:H1299. C:HeLa S3. 10% SDS PAGE. TA308506 diluted at 1:1000



Immunohistochemical analysis of paraffin-embedded U87 xenograft, using RGMB (TA308506) antibody at 1:100 dilution.