

Product datasheet for **TA308500**

Cofilin 2 (CFL2) Rabbit Polyclonal Antibody

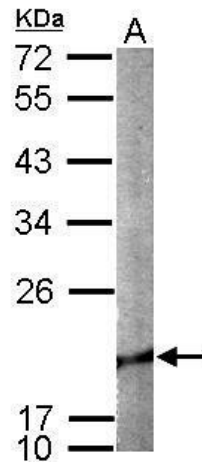
Product data:

Product Type:	Primary Antibodies
Applications:	IF, WB
Recommended Dilution:	ICC/IF:1:100-1:1000; WB:1:500-1:3000
Reactivity:	Human, Mouse (Predicted: Pig, Bovine, Rhesus Monkey)
Host:	Rabbit
Isotype:	IgG
Clonality:	Polyclonal
Immunogen:	Recombinant fragment corresponding to a region within amino acids 1 and 166 of Cofilin 2 (muscle) (Uniprot ID#Q9Y281)
Formulation:	1XPBS, 1% BSA, 20% Glycerol (pH7). 0.025% ProClin 300 was added as a preservative.
Concentration:	lot specific
Purification:	Purified by antigen-affinity chromatography.
Conjugation:	Unconjugated
Storage:	Store at -20°C as received.
Stability:	Stable for 12 months from date of receipt.
Predicted Protein Size:	19 kDa
Gene Name:	cofilin 2
Database Link:	NP_068733 Entrez Gene 12632 Mouse Entrez Gene 1073 Human Q9Y281

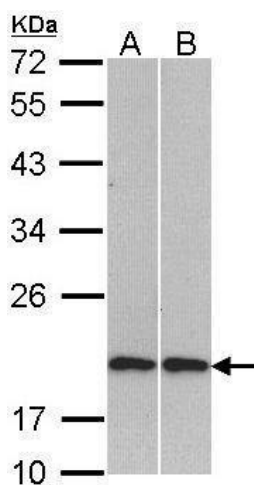


[View online »](#)

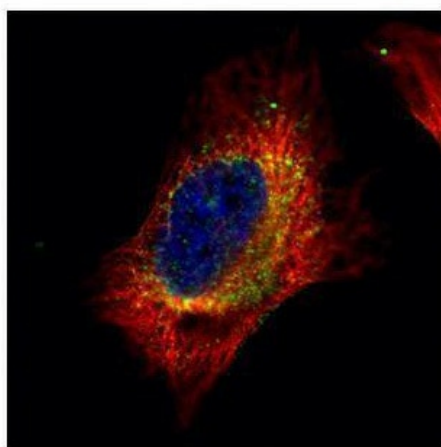
Background:	Cofilin is a widely distributed intracellular actin-modulating protein that binds and depolymerizes filamentous F-actin and inhibits the polymerization of monomeric G-actin in a pH-dependent manner. (Gillett et al., 1996 [PubMed 8800436]). Cofilin-2 is a member of the AC group of proteins that also includes cofilin-1 (CFL1) and destrin (DSTN; MIM 609114), all of which regulate actin-filament dynamics (Bamburg et al., 1999 [PubMed 10461190]; Maciver and Hussey, 2002). The CFL2 gene encodes a skeletal muscle-specific isoform (Vartiainen et al., 2002 [PubMed 11809832]) localized to the thin filaments, where it exerts its effect on actin, in part through interactions with tropomyosins (Ono and Ono, 2002 [PubMed 11901171]). [supplied by OMIM]
Synonyms:	NEM7
Note:	Seq homology of immunogen across species: Pig (100%), Rhesus Monkey (100%), Bovine (100%)
Protein Families:	Druggable Genome
Protein Pathways:	Axon guidance, Fc gamma R-mediated phagocytosis, Regulation of actin cytoskeleton

Product images:

Sample (50 ug of whole cell lysate). A: mouse brain. 12% SDS PAGE. TA308500 diluted at 1:1000.



Sample (30 ug of whole cell lysate). A: H1299. B: Molt-4. 12% SDS PAGE. TA308500 diluted at 1:1000.



Confocal immunofluorescence analysis (Olympus FV10i) of paraformaldehyde-fixed HeLa, using Cofilin 2 (muscle) (TA308500) antibody (Green) at 1:500 dilution. Alpha-tubulin filaments were labeled with anti-alpha tubulin antibody (Red) at 1:2500.