

Product datasheet for **TA308499**

HMBOX1 Rabbit Polyclonal Antibody

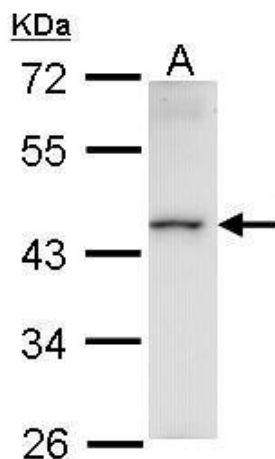
Product data:

Product Type:	Primary Antibodies
Applications:	IF, IHC, WB
Recommended Dilution:	ICC/IF:1:100-1:1000; IHC:1:100-1:1000; WB:1:500-1:3000
Reactivity:	Human (Predicted: Bovine)
Host:	Rabbit
Isotype:	IgG
Clonality:	Polyclonal
Immunogen:	Recombinant fragment corresponding to a region within amino acids 142 and 407 of HMBOX1 (Uniprot ID#Q6NT76)
Formulation:	0.1M Tris, 0.1M Glycine, 10% Glycerol (pH7). 0.01% Thimerosal was added as a preservative.
Concentration:	lot specific
Purification:	Purified by antigen-affinity chromatography.
Conjugation:	Unconjugated
Storage:	Store at -20°C as received.
Stability:	Stable for 12 months from date of receipt.
Predicted Protein Size:	47 kDa
Gene Name:	homeobox containing 1
Database Link:	NP_001129198 Entrez Gene 79618 Human Q6NT76
Synonyms:	HNF1LA; HOT1; PBHNF
Note:	Seq homology of immunogen across species: Bovine (100%)
Protein Families:	Transcription Factors

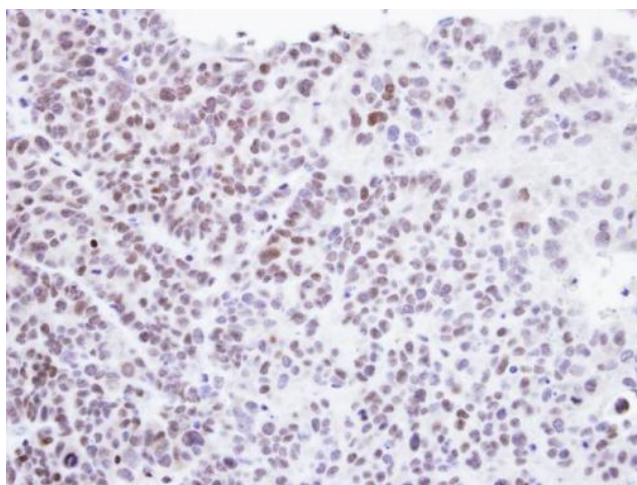


[View online »](#)

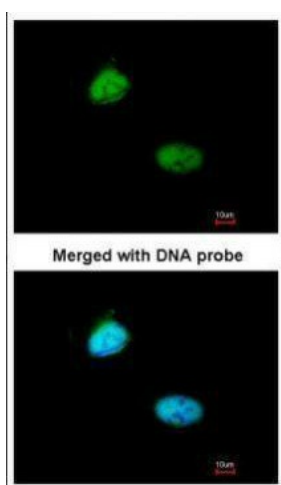
Product images:



Sample (30 ug of whole cell lysate). A: Raji. 10% SDS PAGE. TA308499 diluted at 1:1000.



Immunohistochemical analysis of paraffin-embedded SW480 xenograft, using Homeobox-containing protein 1 (TA308499) antibody at 1:500 dilution.



Immunofluorescence analysis of paraformaldehyde-fixed HeLa, using Homeobox-containing protein 1 (TA308499) antibody at 1:200 dilution.