

## Product datasheet for **TA308498**

### p21 Ras (HRAS) Rabbit Polyclonal Antibody

#### Product data:

Product Type:	Primary Antibodies
Applications:	IF, IHC, WB
Recommended Dilution:	ICC/IF:1:100-1:1000; IHC:1:100-1:1000; WB:1:500-1:3000
Reactivity:	Human (Predicted: Xenopus, Chicken, Bovine, Rhesus Monkey, X. tropicalis)
Host:	Rabbit
Isotype:	IgG
Clonality:	Polyclonal
Immunogen:	Synthetic peptide corresponding to a region within amino acids 111 and 189 of H-Ras (Uniprot ID#P01112)
Formulation:	1XPBS, 20% Glycerol (pH7). 0.025% ProClin 300 was added as a preservative.
Concentration:	lot specific
Purification:	Purified by antigen-affinity chromatography.
Conjugation:	Unconjugated
Storage:	Store at -20°C as received.
Stability:	Stable for 12 months from date of receipt.
Predicted Protein Size:	21 kDa
Gene Name:	Harvey rat sarcoma viral oncogene homolog
Database Link:	<a href="#">NP_789765</a> <a href="#">Entrez Gene 3265 Human P01112</a>



[View online »](#)

**Background:**

This gene belongs to the Ras oncogene family, whose members are related to the transforming genes of mammalian sarcoma retroviruses. The products encoded by these genes function in signal transduction pathways. These proteins can bind GTP and GDP, and they have intrinsic GTPase activity. This protein undergoes a continuous cycle of de- and re-palmitoylation, which regulates its rapid exchange between the plasma membrane and the Golgi apparatus. Mutations in this gene cause Costello syndrome, a disease characterized by increased growth at the prenatal stage, growth deficiency at the postnatal stage, predisposition to tumor formation, mental retardation, skin and musculoskeletal abnormalities, distinctive facial appearance and cardiovascular abnormalities. Defects in this gene are implicated in a variety of cancers, including bladder cancer, follicular thyroid cancer, and oral squamous cell carcinoma. Multiple transcript variants, which encode different isoforms, have been identified for this gene. [provided by RefSeq]

**Synonyms:**

C-BAS; C-H-RAS; C-HA-RAS1; CTLO; H-RASIDX; HAMSIV; HAS; HRAS1; p21ras; RASH1

**Note:**

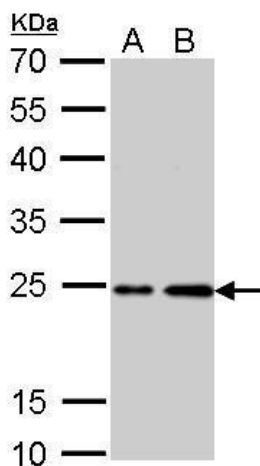
Seq homology of immunogen across species: *Xenopus laevis* (100%), *Xenopus Tropicalis* (100%), Chicken (100%), Rhesus Monkey (100%), Bovine (88%)

**Protein Families:**

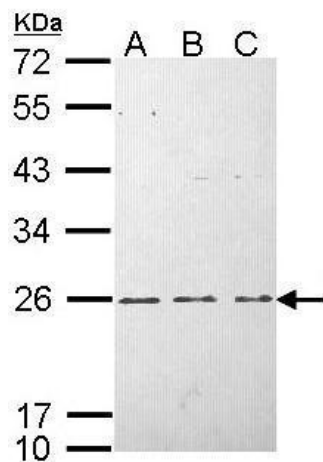
Druggable Genome

**Protein Pathways:**

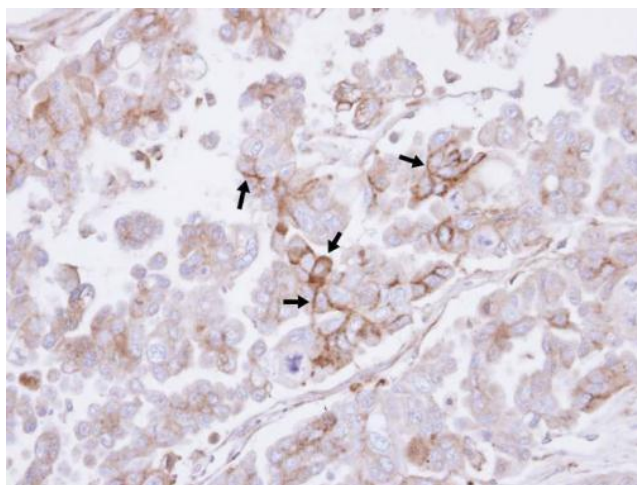
Acute myeloid leukemia, Axon guidance, B cell receptor signaling pathway, Bladder cancer, Chemokine signaling pathway, Chronic myeloid leukemia, Endocytosis, Endometrial cancer, ErbB signaling pathway, Fc epsilon RI signaling pathway, Focal adhesion, Gap junction, Glioma, GnRH signaling pathway, Insulin signaling pathway, Long-term depression, Long-term potentiation, MAPK signaling pathway, Melanogenesis, Melanoma, Natural killer cell mediated cytotoxicity, Neurotrophin signaling pathway, Non-small cell lung cancer, Pathways in cancer, Prostate cancer, Regulation of actin cytoskeleton, Renal cell carcinoma, T cell receptor signaling pathway, Thyroid cancer, Tight junction, VEGF signaling pathway

**Product images:**

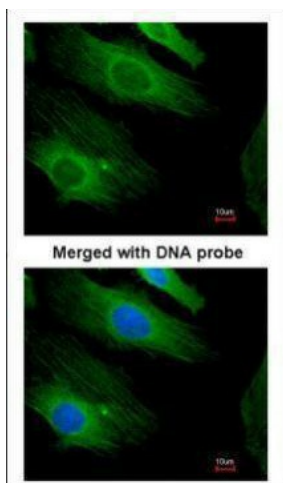
H-Ras antibody detects HRAS protein by Western blot analysis. A. 30 ug PC-12 whole cell lysate/extract. B. 30 ug Rat2 whole cell lysate/extract. 12 % SDS-PAGE. H-Ras antibody (TA308498) dilution: 1:1000



Sample (30 ug of whole cell lysate). A: HeLa. B: Hep G2. C: Molt-4. 12% SDS PAGE. TA308498 diluted at 1:1000.



Immunohistochemical analysis of paraffin-embedded OVCAR3 xenograft, using H-Ras (TA308498) antibody at 1:500 dilution.



Immunofluorescence analysis of paraformaldehyde-fixed HeLa, using H-Ras (TA308498) antibody at 1:200 dilution.