

Product datasheet for **TA308493**

alpha 1a Adrenergic Receptor (ADRA1A) Rabbit Polyclonal Antibody

Product data:

Product Type:	Primary Antibodies
Applications:	IF, IHC, WB
Recommended Dilution:	ICC/IF:1:100-1:1000; IHC:1:100-1:1000; WB:1:500-1:3000
Reactivity:	Human (Predicted: Bovine, Dog, Pig, Rabbit, Guinea Pig, Rhesus Monkey)
Host:	Rabbit
Isotype:	IgG
Clonality:	Polyclonal
Immunogen:	Synthetic peptide contain a sequence corresponding to a region within amino acids 206 and 260 of alpha 1a Adrenergic Receptor (Uniprot ID#P35348)
Formulation:	1XPBS, 20% Glycerol (pH7). 0.01% Thimerosal was added as a preservative.
Concentration:	lot specific
Purification:	Purified by antigen-affinity chromatography.
Conjugation:	Unconjugated
Storage:	Store at -20°C as received.
Stability:	Stable for 12 months from date of receipt.
Predicted Protein Size:	52 kDa
Gene Name:	adrenoceptor alpha 1A
Database Link:	NP_000671 Entrez Gene 403866 Dog Entrez Gene 148 Human P35348
Background:	Alpha-1-adrenergic receptors (alpha-1-ARs) are members of the G protein-coupled receptor superfamily. They activate mitogenic responses and regulate growth and proliferation of many cells. There are 3 alpha-1-AR subtypes: alpha-1A, -1B and -1D, all of which signal through the Gq/11 family of G-proteins and different subtypes show different patterns of activation. This gene encodes alpha-1A-adrenergic receptor. Alternative splicing of this gene generates four transcript variants, which encode four different isoforms with distinct C-termini but having similar ligand binding properties. [provided by RefSeq]
Synonyms:	ADRA1C; ADRA1L1; ALPHA1AAR



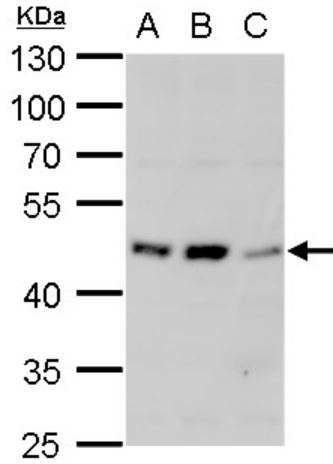
[View online »](#)

Note: Seq homology of immunogen across species: Dog (100%), Pig (100%), Rabbit (100%), Rhesus Monkey (100%), Bovine (100%), Guinea pig (100%)

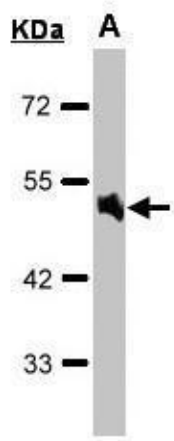
Protein Families: Druggable Genome, GPCR, Transmembrane

Protein Pathways: Calcium signaling pathway, Neuroactive ligand-receptor interaction, Vascular smooth muscle contraction

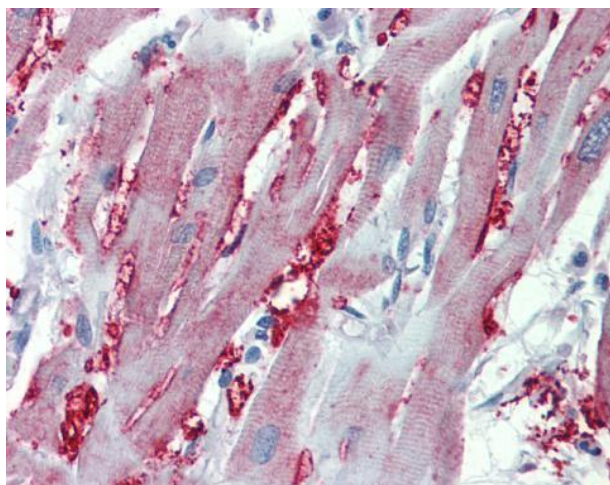
Product images:



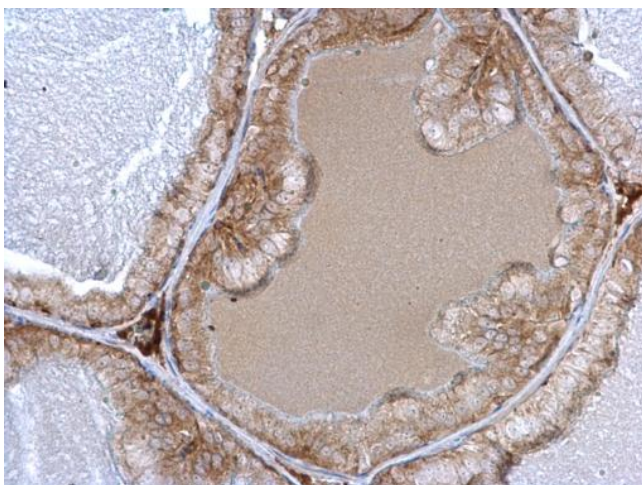
alpha 1a Adrenergic Receptor antibody detects alpha 1a Adrenergic Receptor protein by western blot analysis. A. 30 ug Jurkat whole cell lysate/extract. B. 30 ug Raji whole cell lysate/extract. C. 30 ug NCI-H929 whole cell lysate/extract. 10 % SDS-PAGE. al



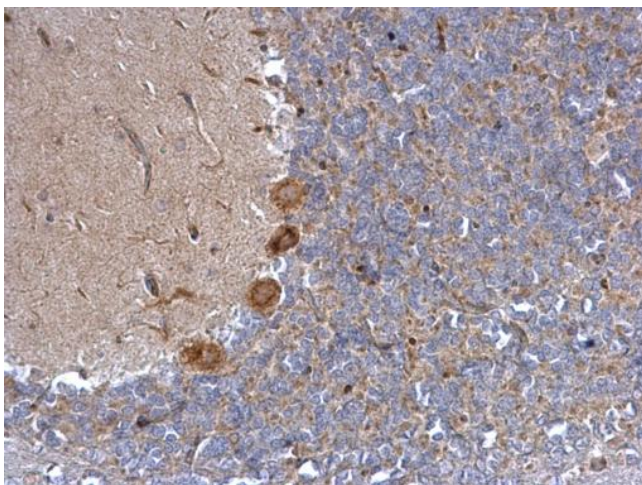
Sample (30 ug of whole cell lysate). A:Raji. 10% SDS PAGE. TA308493 diluted at 1:1000



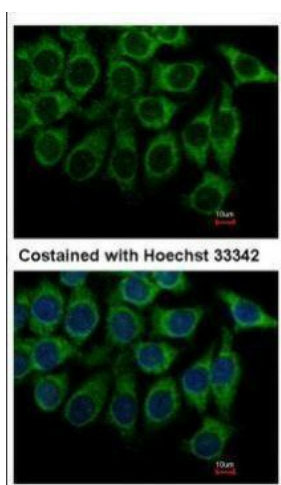
Immunohistochemical analysis of paraffin-embedded Heart, using alpha 1a Adrenergic Receptor (TA308493) antibody (10 ug/ml).



alpha 1a Adrenergic Receptor antibody detects alpha 1a Adrenergic Receptor protein at cytosol on mouse prostate by immunohistochemical analysis. Sample: Paraffin-embedded mouse prostate. alpha 1a Adrenergic Receptor antibody (TA308493) dilution: 1:500.



alpha 1a Adrenergic Receptor antibody detects alpha 1a Adrenergic Receptor protein at cytosol on rat hind brain by immunohistochemical analysis. Sample: Paraffin-embedded rat hind brain. alpha 1a Adrenergic Receptor antibody (TA308493) dilution: 1:500.



Immunofluorescence analysis of methanol-fixed Hep3B, using alpha 1a Adrenergic Receptor (TA308493) antibody at 1:500 dilution.