

## Product datasheet for **TA308491**

### **MST3 (STK24) Rabbit Polyclonal Antibody**

#### **Product data:**

<b>Product Type:</b>	Primary Antibodies
<b>Applications:</b>	IF, IHC, WB
<b>Recommended Dilution:</b>	ICC/IF:1:100-1:1000; IHC:1:100-1:1000; WB:1:500-1:3000
<b>Reactivity:</b>	Human (Predicted: Bovine, Chicken, Xenopus, Rhesus Monkey, X. tropicalis, Mouse)
<b>Host:</b>	Rabbit
<b>Isotype:</b>	IgG
<b>Clonality:</b>	Polyclonal
<b>Immunogen:</b>	Synthetic peptide corresponding to a region within amino acids 137 and 231 of MST3 (Uniprot ID#Q9Y6E0)
<b>Formulation:</b>	0.1M Tris, 0.1M Glycine, 10% Glycerol (pH7). 0.01% Thimerosal was added as a preservative.
<b>Concentration:</b>	lot specific
<b>Purification:</b>	Purified by antigen-affinity chromatography.
<b>Conjugation:</b>	Unconjugated
<b>Storage:</b>	Store at -20°C as received.
<b>Stability:</b>	Stable for 12 months from date of receipt.
<b>Predicted Protein Size:</b>	48 kDa
<b>Gene Name:</b>	serine/threonine kinase 24
<b>Database Link:</b>	<a href="#">NP_001027467</a> <a href="#">Entrez Gene 223255 Mouse</a> <a href="#">Entrez Gene 8428 Human</a> <a href="#">Q9Y6E0</a>



[View online »](#)

**Background:**

The yeast 'Sterile 20' gene (STE20) functions upstream of the mitogen-activated protein kinase (MAPK) cascade. In mammals, protein kinases related to STE20 can be divided into 2 subfamilies based on their structure and regulation. Members of the PAK subfamily (see PAK3; MIM 300142) contain a C-terminal catalytic domain and an N-terminal regulatory domain that has a CDC42 (MIM 116952)-binding domain. In contrast, members of the GCK subfamily (see MAP4K2; MIM 603166), also called the Sps1 subfamily, have an N-terminal catalytic domain and a C-terminal regulatory domain without a CDC42-binding domain. STK24 belongs to the GCK subfamily of STE20-like kinases (Zhou et al., 2000 [PubMed 10644707]). [supplied by OMIM]

**Synonyms:**

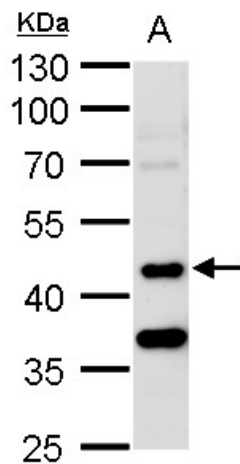
HEL-S-95; MST3; MST3B; STE20; STK3

**Note:**

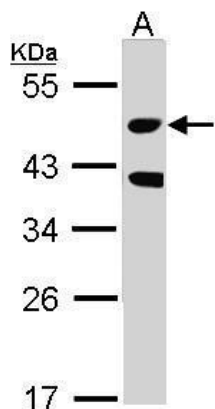
Seq homology of immunogen across species: Mouse (100%), Xenopus laevis (100%), Xenopus Tropicalis (100%), Chicken (100%), Rhesus Monkey (100%), Bovine (100%)

**Protein Families:**

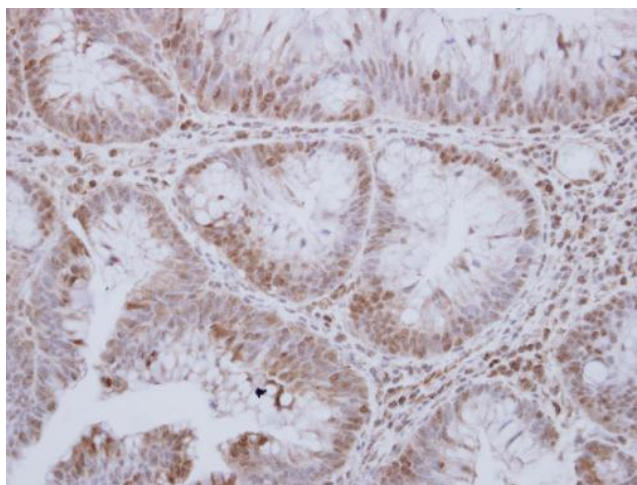
Druggable Genome, Protein Kinase

**Product images:**

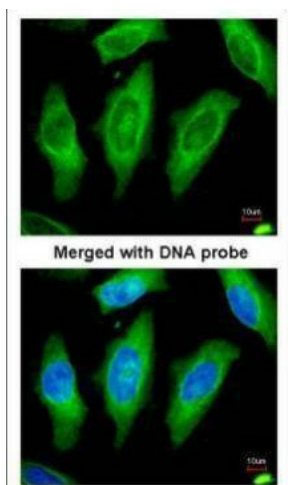
STK24 antibody [N2C1], Internal detects STK24 protein by western blot analysis. A. 50 ug rat brain lysate/extract. 10 % SDS-PAGE. STK24 antibody [N2C1], Internal (TA308491) dilution: 1:1000



Sample (30 ug of whole cell lysate). A: Raji. 10% SDS PAGE. TA308491 diluted at 1:1000.



STK24 antibody [N2C1], Internal detects STK24 protein at cytosol and nucleus on human breast carcinoma by immunohistochemical analysis. Sample: Paraffin-embedded human breast carcinoma. STK24 antibody [N2C1], Internal (TA308491) dilution: 1:250.



Immunofluorescence analysis of paraformaldehyde-fixed HeLa, using STK24 (TA308491) antibody at 1:200 dilution.