

## Product datasheet for **TA308490**

### LBP Rabbit Polyclonal Antibody

#### Product data:

Product Type:	Primary Antibodies
Applications:	IHC, WB
Recommended Dilution:	IHC:1:100-1:1000; WB:1:500-1:3000
Reactivity:	Human
Host:	Rabbit
Isotype:	IgG
Clonality:	Polyclonal
Immunogen:	Recombinant fragment corresponding to a region within amino acids 166 and 467 of LBP (Uniprot ID#P18428)
Formulation:	0.1M Tris, 0.1M Glycine, 10% Glycerol (pH7). 0.01% Thimerosal was added as a preservative.
Purification:	Purified by antigen-affinity chromatography.
Conjugation:	Unconjugated
Storage:	Store at -20°C as received.
Stability:	Stable for 12 months from date of receipt.
Predicted Protein Size:	53 kDa
Gene Name:	lipopolysaccharide binding protein
Database Link:	<a href="#">NP_004130</a> <a href="#">Entrez Gene 3929 Human P18428</a>



[View online »](#)

**Background:**

The protein encoded by this gene is involved in the acute-phase immunologic response to gram-negative bacterial infections. Gram-negative bacteria contain a glycolipid, lipopolysaccharide (LPS), on their outer cell wall. Together with bactericidal permeability-increasing protein (BPI), the encoded protein binds LPS and interacts with the CD14 receptor, probably playing a role in regulating LPS-dependent monocyte responses. Studies in mice suggest that the encoded protein is necessary for the rapid acute-phase response to LPS but not for the clearance of LPS from circulation. This protein is part of a family of structurally and functionally related proteins, including BPI, plasma cholesteryl ester transfer protein (CETP), and phospholipid transfer protein (PLTP). Finally, this gene is found on chromosome 20, immediately downstream of the BPI gene. [provided by RefSeq]

**Synonyms:**

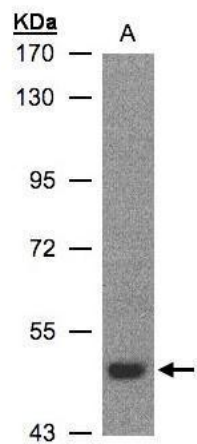
BPIFD2

**Protein Families:**

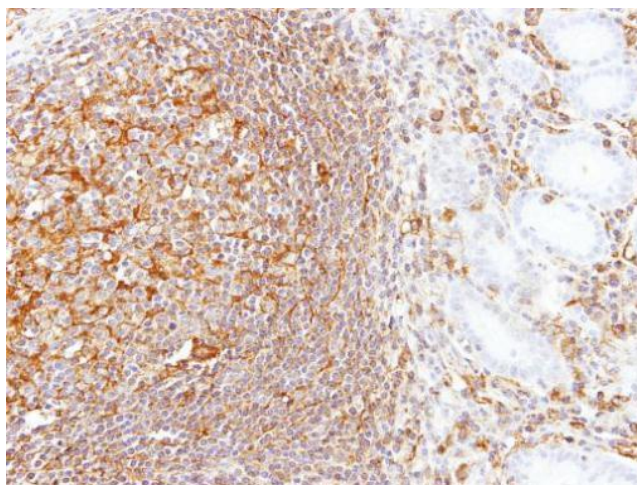
Druggable Genome, Secreted Protein

**Protein Pathways:**

Toll-like receptor signaling pathway

**Product images:**

Sample (30 ug whole cell lysate). A:H1299. 7.5% SDS PAGE. TA308490 diluted at 1:500



Immunohistochemical analysis of paraffin-embedded Gastric N+T, using LBP (TA308490) antibody at 1:100 dilution.