

Product datasheet for **TA308488**

FPGT Rabbit Polyclonal Antibody

Product data:

Product Type:	Primary Antibodies
Applications:	IHC, WB
Recommended Dilution:	IHC:1:100-1:1000; WB:1:500-1:3000
Reactivity:	Human (Predicted: Dog, Monkey, Pig, Rabbit, Bovine)
Host:	Rabbit
Isotype:	IgG
Clonality:	Polyclonal
Immunogen:	Recombinant fragment corresponding to a region within amino acids 146 and 453 of FPGT (Uniprot ID#O14772)
Formulation:	0.1M Tris, 0.1M Glycine, 10% Glycerol (pH7). 0.01% Thimerosal was added as a preservative.
Concentration:	lot specific
Purification:	Purified by antigen-affinity chromatography.
Conjugation:	Unconjugated
Storage:	Store at -20°C as received.
Stability:	Stable for 12 months from date of receipt.
Predicted Protein Size:	67 kDa
Gene Name:	fucose-1-phosphate guanylyltransferase
Database Link:	NP_003829 Entrez Gene 100533995 Dog Entrez Gene 100533986 Monkey Entrez Gene 8790 Human O14772



[View online »](#)

Background:

L-fucose is a key sugar in glycoproteins and other complex carbohydrates since it may be involved in many of the functional roles of these macromolecules, such as in cell-cell recognition. The fucosyl donor for these fucosylated oligosaccharides is GDP-beta-L-fucose. There are two alternate pathways for the biosynthesis of GDP-fucose; the major pathway converts GDP-alpha-D-mannose to GDP-beta-L-fucose. The protein encoded by this gene participates in an alternate pathway that is present in certain mammalian tissues, such as liver and kidney, and appears to function as a salvage pathway to reutilize L-fucose arising from the turnover of glycoproteins and glycolipids. This pathway involves the phosphorylation of L-fucose to form beta-L-fucose-1-phosphate, and then condensation of the beta-L-fucose-1-phosphate with GTP by fucose-1-phosphate guanylyltransferase to form GDP-beta-L-fucose. [provided by RefSeq]

Synonyms:

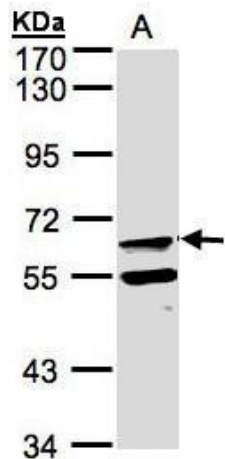
GFPP

Note:

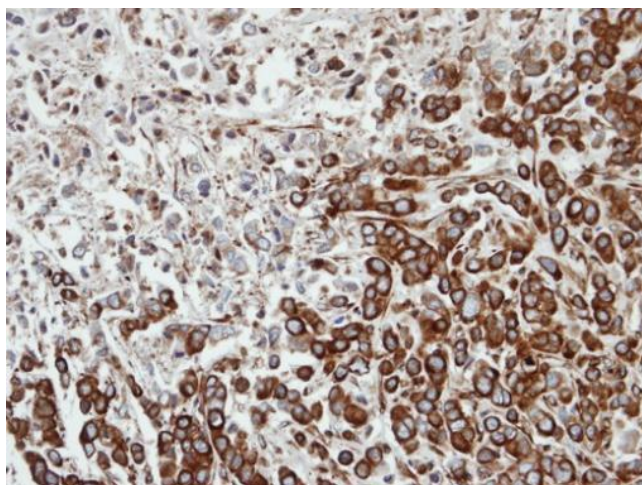
Seq homology of immunogen across species: Dog (83%), Monkey (96%), Pig (84%), Rabbit (82%), Bovine (82%)

Protein Pathways:

Amino sugar and nucleotide sugar metabolism, Fructose and mannose metabolism, Metabolic pathways

Product images:

Sample (30 ug of whole cell lysate). A:Raji. 7.5% SDS PAGE. TA308488 diluted at 1:500



Immunohistochemical analysis of paraffin-embedded MDA-MB-468 xenograft, using FPGT (TA308488) antibody at 1:100 dilution.